

AXOR MyEdition

3-hole basin mixer 70 with push-open waste set

Surfaces: **Chrome/Mirror Glass** Article Number: **47050000**



Description

product features

- consists of: 3-hole basin mixer, plate, waste set
- ComfortZone 70
- projection 151 mm
- plate of glass made of safety glass
- spray type: PowderRain
- flow rate at 3 bar: 5 l/min
- ceramic valves hot/ cold 90°
- with isolated water conduction
- suitable for continuous flow water heaters
- push-open waste set G 1¼
- connection type: G ¾ connections
- connection dimension: DN15
- DVGW NW-6501CU0235
- P-IX 29360/IO
- ACS 18 ACC LY 594, valide jusqu'au 17.10.2023
- Kiwa UK 1904710
- STA 1426

Technology



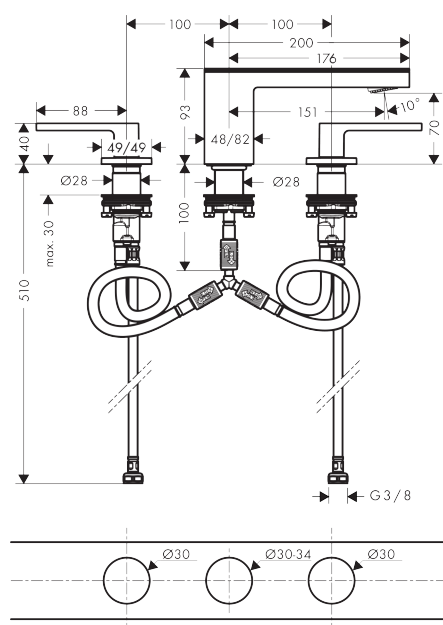
Design awards



Product image



Scale drawing



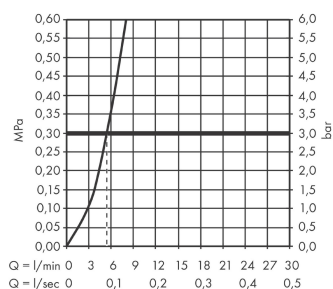
AXOR MyEdition

3-hole basin mixer 70 with push-open waste set

Surfaces: **Chrome/Mirror Glass** Article Number: **47050000**



Flowchart

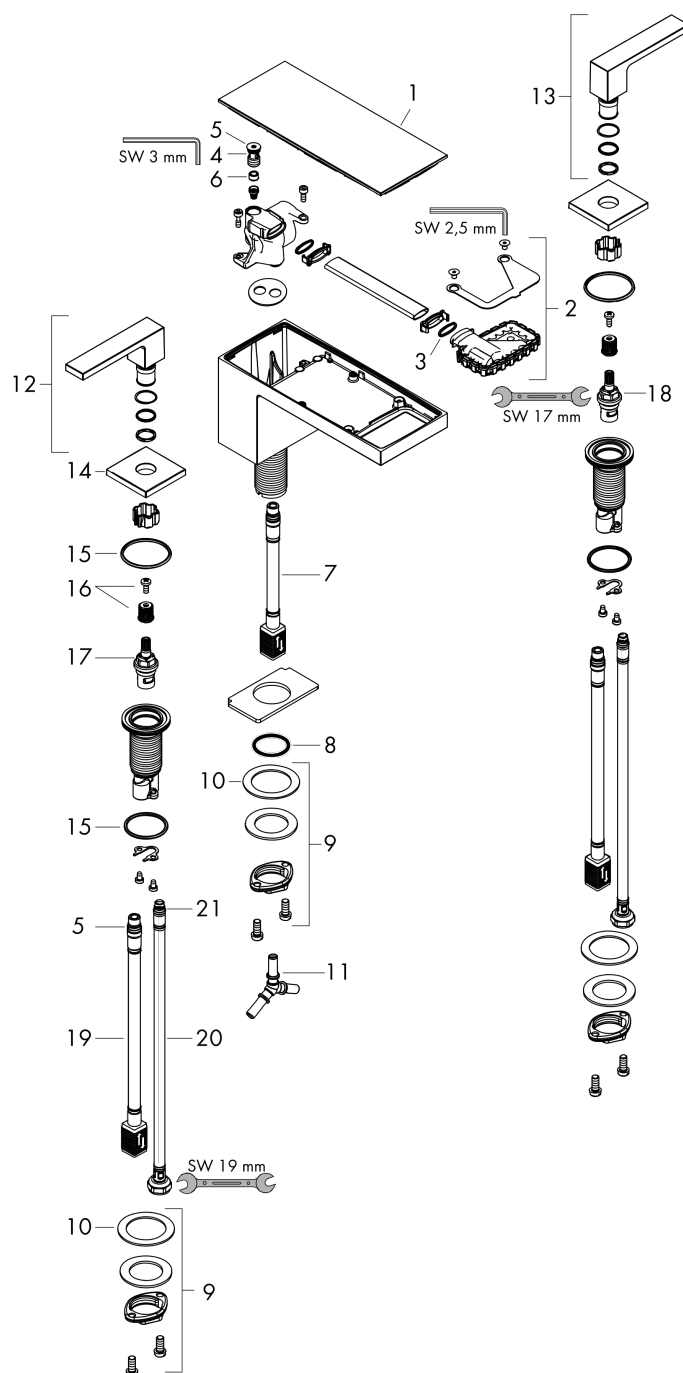


AXOR MyEdition
3-hole basin mixer 70 with push-open waste set
 Surfaces: **Chrome/Mirror Glass** Article Number: **47050000**



Exploded Drawing

Year of production: >01/19



AXOR MyEdition
3-hole basin mixer 70 with push-open waste set
 Surfaces: **Chrome/Mirror Glass** Article Number: **47050000**



Spare part list

Year of production: >01/19

Pos.	Description	Article Number	PC	PU
1	cover	47900000	0	1
2	spray former	93385000	0	1
3	O-ring 13x1,5	98475000	0	1
4	service unit	93384007	0	1
5	O-ring 8x1,75	97827000	0	1
6	flow limiter (5 l/min)	95311000	0	1
7	connection hose 200 mm M10x1	92913000	0	1
8	O-ring 26x4	92191000	0	1
9	fixing set (Ø 28)	92909000	0	1
10	lever collar	97548000	0	1
11	hose connection angel	92905000	0	1
12	handle for hot water	93379000	0	1
13	handle for cold water	93380000	0	1
14	escutcheon for handle	93381000	0	1
15	O-ring 33x2,5	92907000	0	1
16	handle fixing set	98932000	0	1
17	shut off unit right closing	98817000	0	1
18	shut off unit left closing	95366000	0	1
19	connection hose 400 mm M10x1	92914000	0	1
20	connection hose 450 mm M8x0,75 G3/8	97206000	0	1
21	O-ring 6,6x1,6	93019000	0	1
a	push-open waste set	51300000	0	1
b	service unit	93384000	0	1
c	flat seal	98749000	0	1
d	cover	47903000	0	1
e	cover	47906000	0	1
f	cover	47909000	0	1
g	cover	47913000	0	1
h	cover	47916000	0	1