

**AXOR One**  
**Thermostatic module for concealed installation for 2 functions**  
 Surfaces: **Brushed Gold Optic**    Article Number: **45712250**



## Description

### product features

- Eco-Function: flow rate regulation via lever handle
- depending on volume flow and installation situation approx. 50% flow rate reduction
- 2 functions and 1 additional outlet
- simultaneous use of several outlets
- comfortable turning on / off of consumers with large Select-paddle
- flow rate per outlet: 24 l/min
- flow rate by simultaneous use of all outlets: 30 l/min
- thermostat cartridge, Select valve, ceramic valves 90°
- min. operating pressure: 1 bar
- safety lock at 40° C
- temperature limitation adjustable
- the thermostat offers the possibility for thermal disinfection
- non-return valve
- connection type: basic set
- P-IX 29148/IIDD
- ACS 16 ACC NY 372, valide jusqu'au 22.11.2021
- JWWA E-565
- Kiwa K11292\_Thermostatic mixers
- STA 1515

## Technology



## Design awards



red dot award 2016  
winner

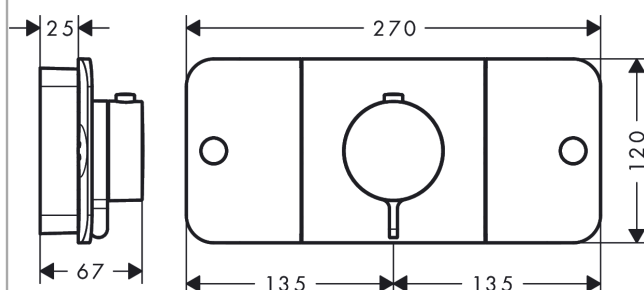
**AXOR One**  
**Thermostatic module for concealed installation for 2 functions**  
 Surfaces: **Brushed Gold Optic** Article Number: **45712250**



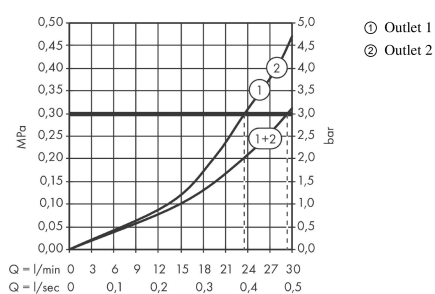
**Product image**



**Scale drawing**



**Flowchart**

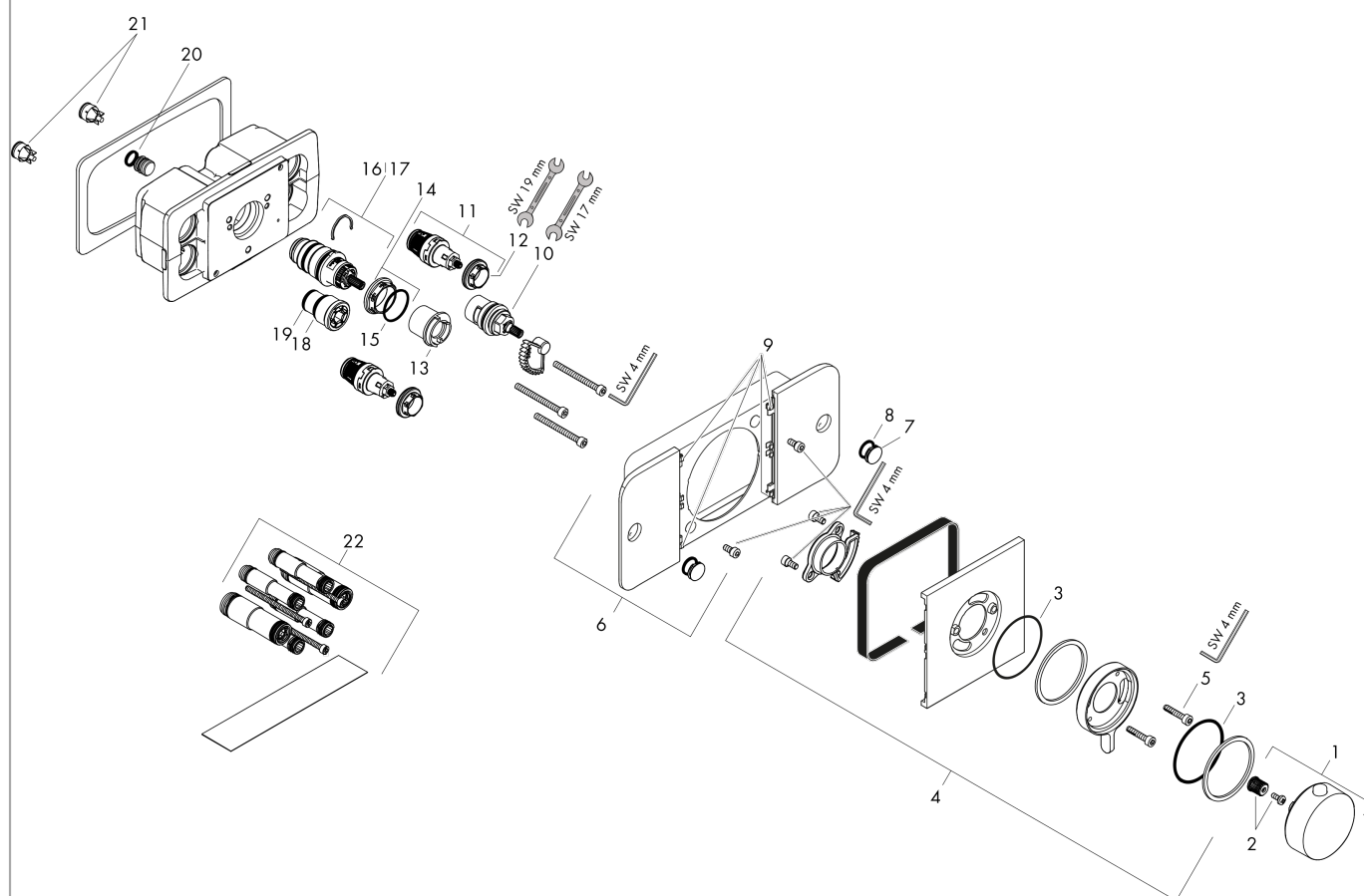


**AXOR One**  
**Thermostatic module for concealed installation for 2 functions**  
 Surfaces: **Brushed Gold Optic**    Article Number: **45712250**



## Exploded Drawing

Year of production: >11/16



**AXOR One**  
**Thermostatic module for concealed installation for 2 functions**  
 Surfaces: **Brushed Gold Optic**    Article Number: **45712250**



## Spare part list

Year of production: >11/16

Pos.	Description	Article Number	PC	PU
1	handle for thermostat	92600250	0	1
2	handle fixing set	98932000	0	1
3	O-ring 57x2	98210000	0	1
4	escutcheon	92599250	0	1
5	hexagon socket screw M5x25	97664000	0	1
6	control panel	92612250	0	1
7	set of symbols	92541990	0	1
8	O-ring 13x2	98128000	0	1
9	set of lever collars	93121000	0	1
10	shut off unit	98536000	0	1
11	shut off unit	95758000	0	1
12	nut	98368000	0	1
13	safety set	92614000	0	1
14	nut	98913000	0	1
15	O-ring 26x1,5	98390000	0	1
16	thermostat cartridge	98282000	0	1
17	cartridge for exchanged connections	92373000	0	1
18	O-ring 21x1,5	98219000	0	1
19	O-ring 17x1,5	98137000	0	1
20	O-ring 11x2	98127000	0	1
21	non return valve (pressure-resistant up to 2 MPa)	92594000	0	1
22	extension 25 mm	45790000	0	1
a	base body	45710180	0	1