

AXOR Uno

Single lever kitchen mixer for concealed installation wall-mounted

Surfaces: **Stainless Steel Finish** Article Number: **38815800**



Description

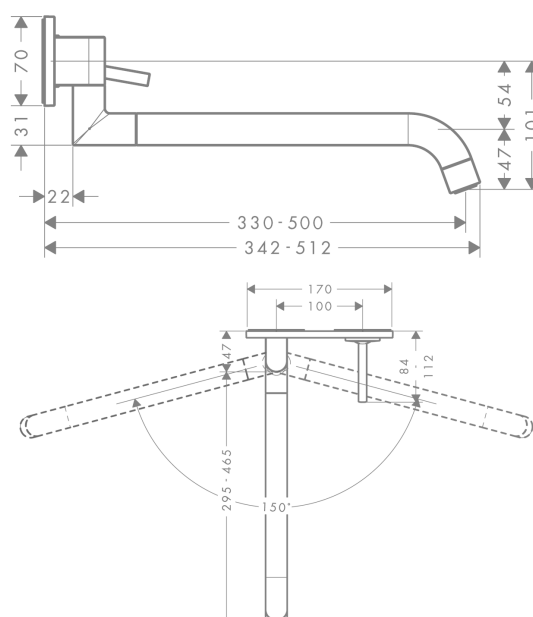
product features

- swivel range adjustable in 2 steps to 110° or 150°
- with telescopic function (330 - 500 mm)
- handle can be positioned on the right or left, depends on the basic set installation
- normal spray
- flow rate 9 l/min
- joystick ceramic cartridge
- connection type: basic set or base unit required
- integrated non-return valve
- suitable for continuous flow water heaters
- SVGW 1712-6707
- P-IX 19974/IIO
- ETA VA 1.42/20111
- WRAS 1903007
- JWWA C-278
- KCW-2012-0427_KM_WSW
- Kiwa K6161_Mechanical Mixers EN817
- STA 1430

Product image



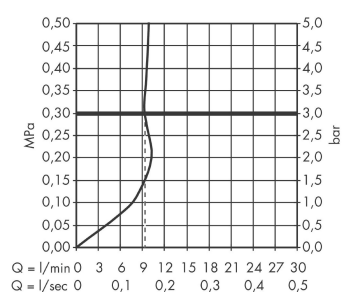
Scale drawing



AXOR Uno
Single lever kitchen mixer for concealed installation wall-mounted
 Surfaces: **Stainless Steel Finish** Article Number: **38815800**



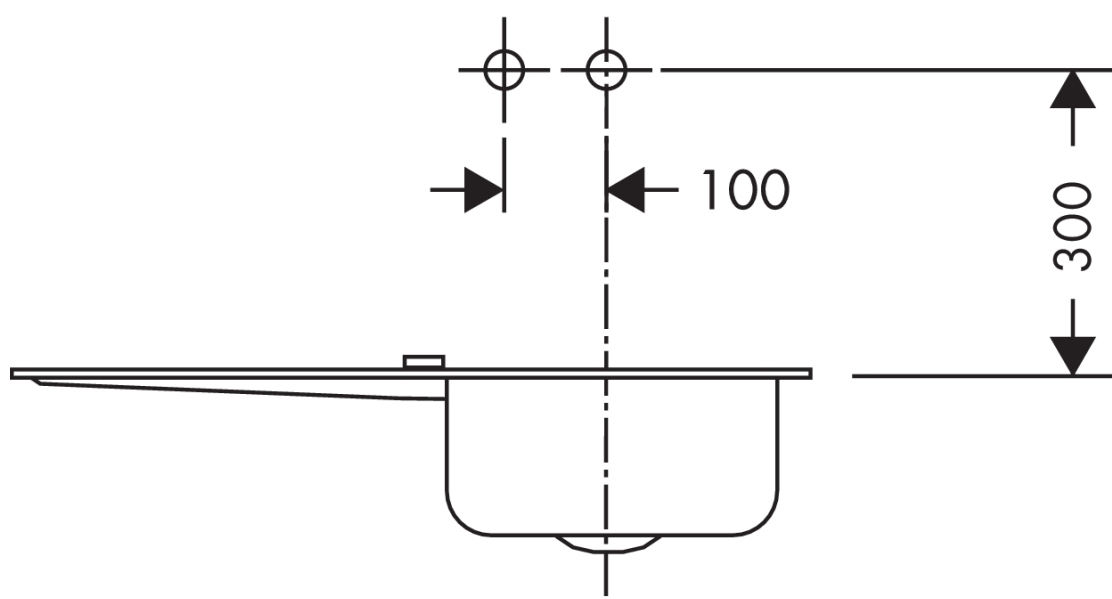
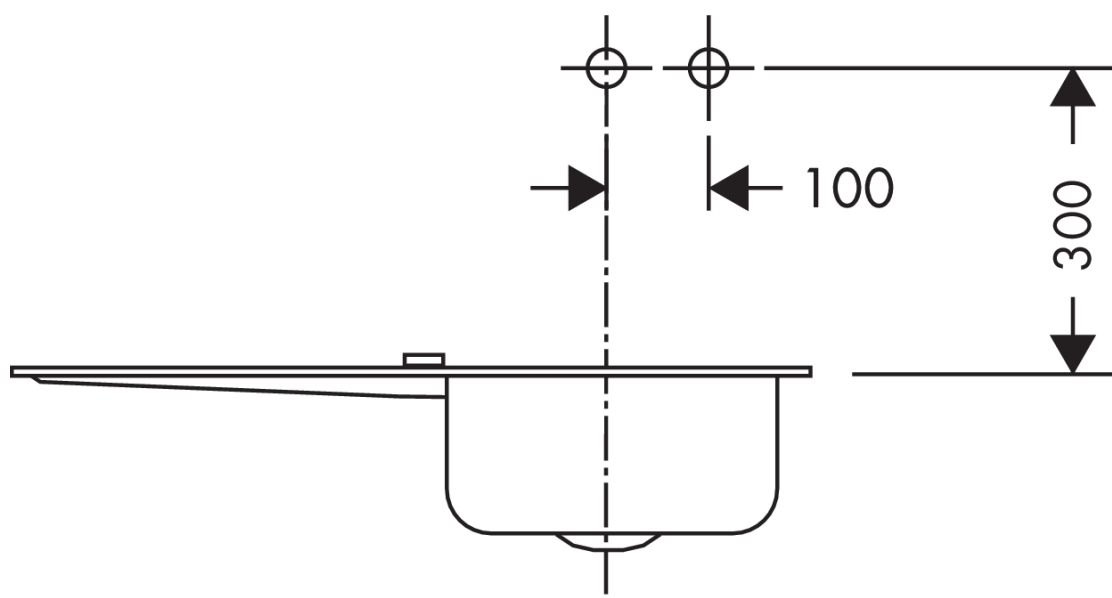
Flowchart



AXOR Uno
Single lever kitchen mixer for concealed installation wall-mounted
 Surfaces: **Stainless Steel Finish** Article Number: **38815800**



Installation examples



AXOR Uno

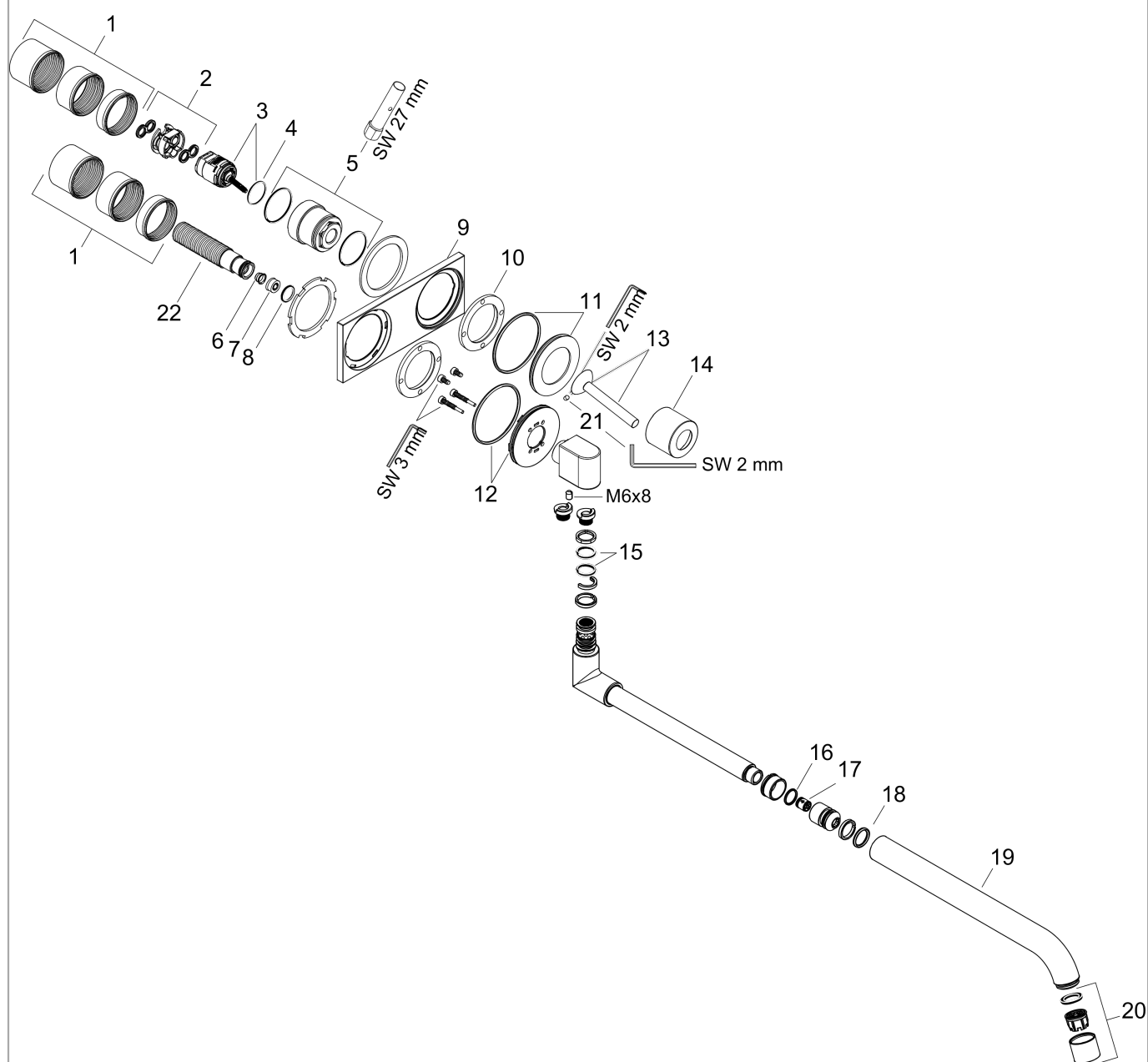
Single lever kitchen mixer for concealed installation wall-mounted

Surfaces: **Stainless Steel Finish** Article Number: **38815800**



Exploded Drawing

Year of production: >11/11



AXOR Uno
Single lever kitchen mixer for concealed installation wall-mounted
 Surfaces: **Stainless Steel Finish** Article Number: **38815800**



Spare part list

Year of production: >11/11

Pos.	Description	Article Number	PC	PU
1	fixing set	97971000	0	1
2	adapter for cartridge	95644000	0	1
3	cartridge, assy	96339000	0	1
4	O-ring 21,95x1,78	95169000	0	1
5	nut	95645000	0	1
6	filter	97735000	0	1
7	flow limiter (9 l/min)	98894000	0	1
8	O-ring 14x2	98129000	0	1
9	escutcheon	95920800	0	1
10	nut	97601000	0	1
11	escutcheon for handle	96912800	0	1
12	escutcheon for spout	95921000	0	1
13	handle	10092800	0	1
14	flange	95922800	0	1
15	O-Ring 14x2,5	98189000	0	1
16	O-ring 13x1,5	98475000	0	1
17	non return valve DW 10	96456000	0	1
18	O-ring 15x2,5	98131000	0	1
19	spout cpl.	95923800	0	1
20	aerator laminar M22x1 (15 l/min)	95967800	0	1
21	hollow set screw M4x6	97767000	0	1
a	base body	13622180	0	1
b	service tool for disassembling the handle	92124000	0	1
c	extension set 25 mm for 13622180	31971000	0	1