

AXOR Uno

Single lever kitchen mixer for concealed installation wall-mounted

Surfaces: **Brushed Red Gold** Article Number: **38815310**



Description

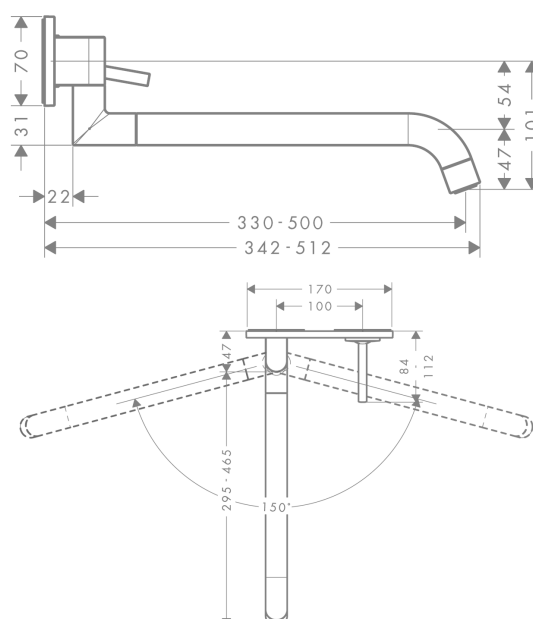
product features

- swivel range adjustable in 2 steps to 110° or 150°
- with telescopic function (330 - 500 mm)
- handle can be positioned on the right or left, depends on the basic set installation
- normal spray
- flow rate 9 l/min
- joystick ceramic cartridge
- connection type: basic set or base unit required
- integrated non-return valve
- suitable for continuous flow water heaters
- SVGW 1712-6707
- P-IX 19974/IIO
- ETA VA 1.42/20111
- WRAS 1903007
- JWWA C-278
- KCW-2012-0427_KM_WSW
- Kiwa K6161_Mechanical Mixers EN817
- STA 1430

Product image



Scale drawing



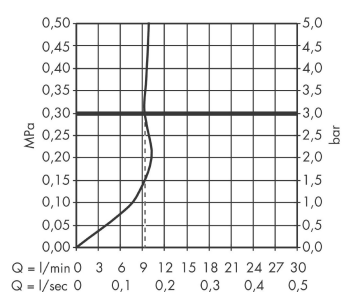
AXOR Uno

Single lever kitchen mixer for concealed installation wall-mounted

Surfaces: **Brushed Red Gold** Article Number: **38815310**



Flowchart



AXOR Uno
Single lever kitchen mixer for concealed installation wall-mounted
 Surfaces: **Brushed Red Gold** Article Number: **38815310**



Installation examples

