

**AXOR Uno**  
**4-hole rim mounted bath mixer with loop handles**  
 Surfaces: **Chrome** Article Number: **38445000**

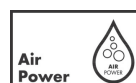


## Description

### product features

- consists of: 4-hole rim mounted bath mixer, hand shower, Secuflex hose set, shower holder
- connection type: basic set
- spray type mixer: normal spray
- spray type hand shower: Rain, RainAir, WhirlAir
- maximum pull-out length of hand shower: 1.10 m
- flow rate at 3 bar: 22 l/min
- ceramic valves hot/ cold 90°
- min. operating pressure: 1 bar
- max. operating pressure: 10 bar
- connection dimension: DN15
- P-IX 18455/IOC
- ACS 19 ACC NY 075, valide jusqu'au 07.03.2024
- STA 1518

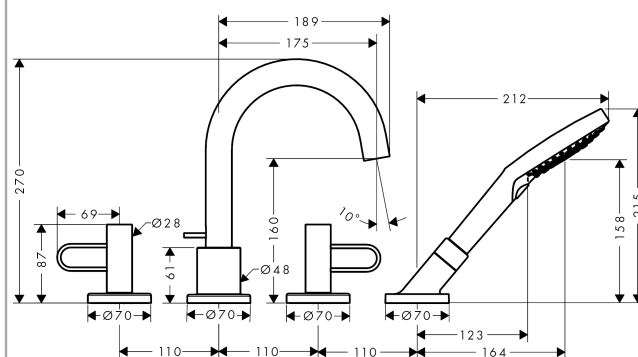
## Technology



## Product image



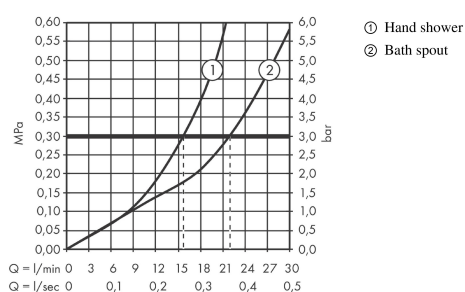
## Scale drawing



**AXOR Uno**  
**4-hole rim mounted bath mixer with loop handles**  
 Surfaces: **Chrome**    Article Number: **38445000**



## Flowchart

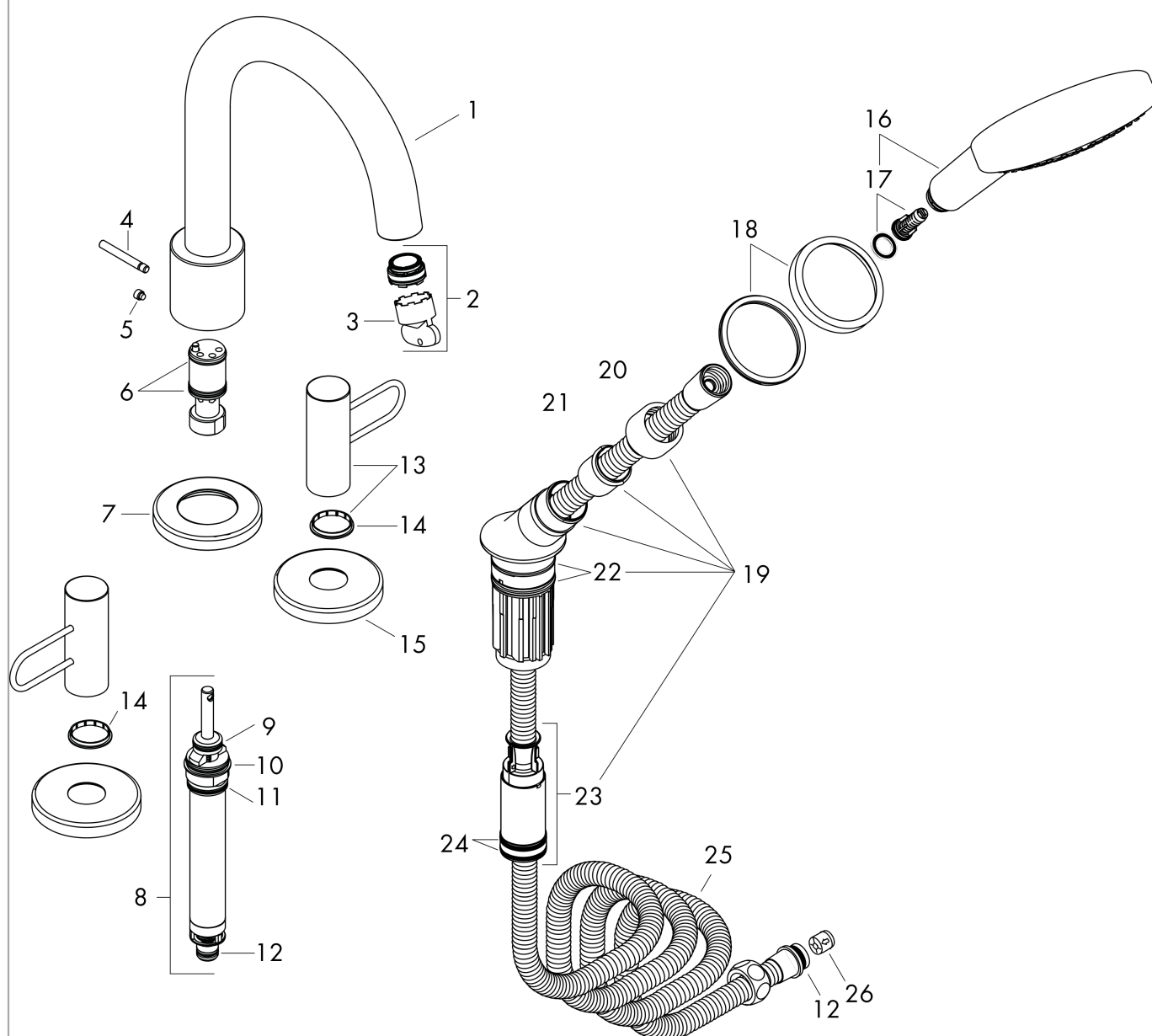


**AXOR Uno**  
**4-hole rim mounted bath mixer with loop handles**  
 Surfaces: **Chrome** Article Number: **38445000**



## Exploded Drawing

Year of production: >04/17



**AXOR Uno**  
**4-hole rim mounted bath mixer with loop handles**  
 Surfaces: **Chrome**    Article Number: **38445000**



## Spare part list

Year of production: >04/17

| Pos. | Description                         | Article Number | PC | PU |
|------|-------------------------------------|----------------|----|----|
| 1    | spout cpl.                          | 93043000       | 0  | 1  |
| 2    | aerator M24x1 (30 l/min)            | 98998000       | 0  | 1  |
| 3    | special tool                        | 95158000       | 0  | 1  |
| 4    | diverter knob                       | 98707000       | 0  | 1  |
| 5    | hollow set screw M6x6               | 97660000       | 0  | 1  |
| 6    | O-ring 21x1,5                       | 98219000       | 0  | 1  |
| 7    | escutcheon Ø 70 mm                  | 97779000       | 0  | 1  |
| 8    | selector assy                       | 96775000       | 0  | 1  |
| 9    | O-Ring 14x2,5                       | 98189000       | 0  | 1  |
| 10   | O-Ring 23x2,5                       | 98183000       | 0  | 1  |
| 11   | O-Ring 22x2                         | 98185000       | 0  | 1  |
| 12   | O-ring 11x2                         | 98127000       | 0  | 1  |
| 13   | handle                              | 93064000       | 0  | 1  |
| 14   | set of color-rings cold / hot water | 96319000       | 0  | 1  |
| 15   | escutcheon                          | 31098000       | 0  | 1  |
| 16   | handshower                          | 26050000       | 0  | 1  |
| 17   | filter insert                       | 97708000       | 0  | 1  |
| 18   | escutcheon for shower holder        | 95753000       | 0  | 1  |
| 19   | shower holder, assy                 | 95996000       | 0  | 1  |
| 20   | nut                                 | 97584000       | 0  | 1  |
| 21   | insert for shower holder            | 96942000       | 0  | 1  |
| 22   | O-ring 38x2,5                       | 98198000       | 0  | 1  |
| 23   | hose brake                          | 98656000       | 0  | 1  |
| 24   | O-Ring 28x2                         | 98194000       | 0  | 1  |
| 25   | shower hose 2,00 m                  | 94148000       | 0  | 1  |
| 26   | set of non return valves DW 15      | 94074000       | 0  | 1  |
| a    | concealed item                      | 15480180       | 0  | 1  |