

## AXOR Uno

**Electronic basin mixer for concealed installation wall-mounted with spout 165 mm**

Surfaces: **Chrome**    Article Number: **38119000**



### Description

#### product features

- projection 165 mm
- normal spray
- flow rate at 3 bar: 5 l/min
- theft-proof aerator
- temperature adjustable via iBox
- infrared sensor technology
- automatic environmental adjustment of infrared sensor
- adjustable optical range of infrared sensor (5 settings)
- 230 V / 50 Hz mains connection
- manual water stop for washbasin cleaning
- for ideal function please note a minimum distance of 140 mm from the aerators center to the back rim of the wash basin
- TÜV certified
- dirt filters in the connection hoses
- SVGW 1209-6079
- PA-IX 19804/IO
- ETA VA 1.42/20197
- GDV 04/00120
- ACS 17 ACC NY 156, valide jusqu'au 27.04.2022
- Kiwa K74521\_Electronic Mixers
- STA 1428
- Agrée Belgaqua

### Technology



## AXOR Uno

Electronic basin mixer for concealed installation wall-mounted with spout 165 mm

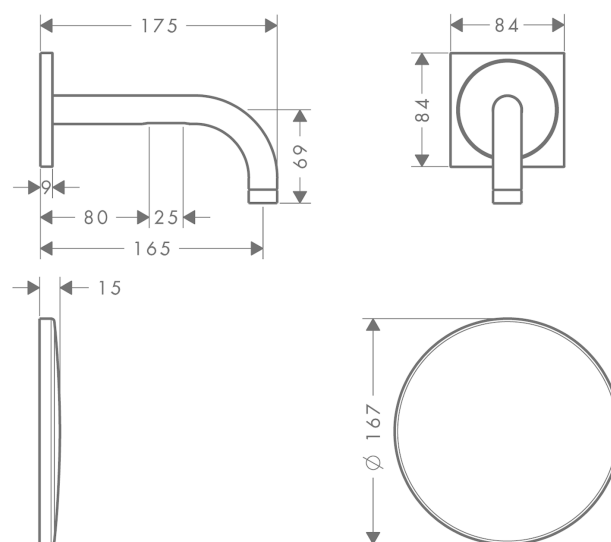
Surfaces: **Chrome** Article Number: **38119000**



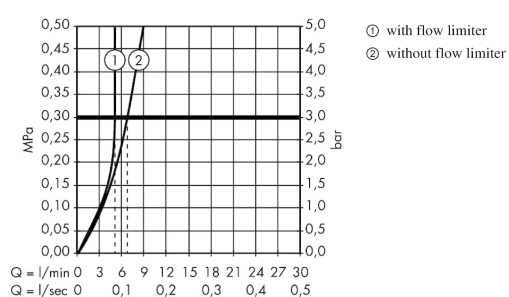
### Product image



### Scale drawing



### Flowchart



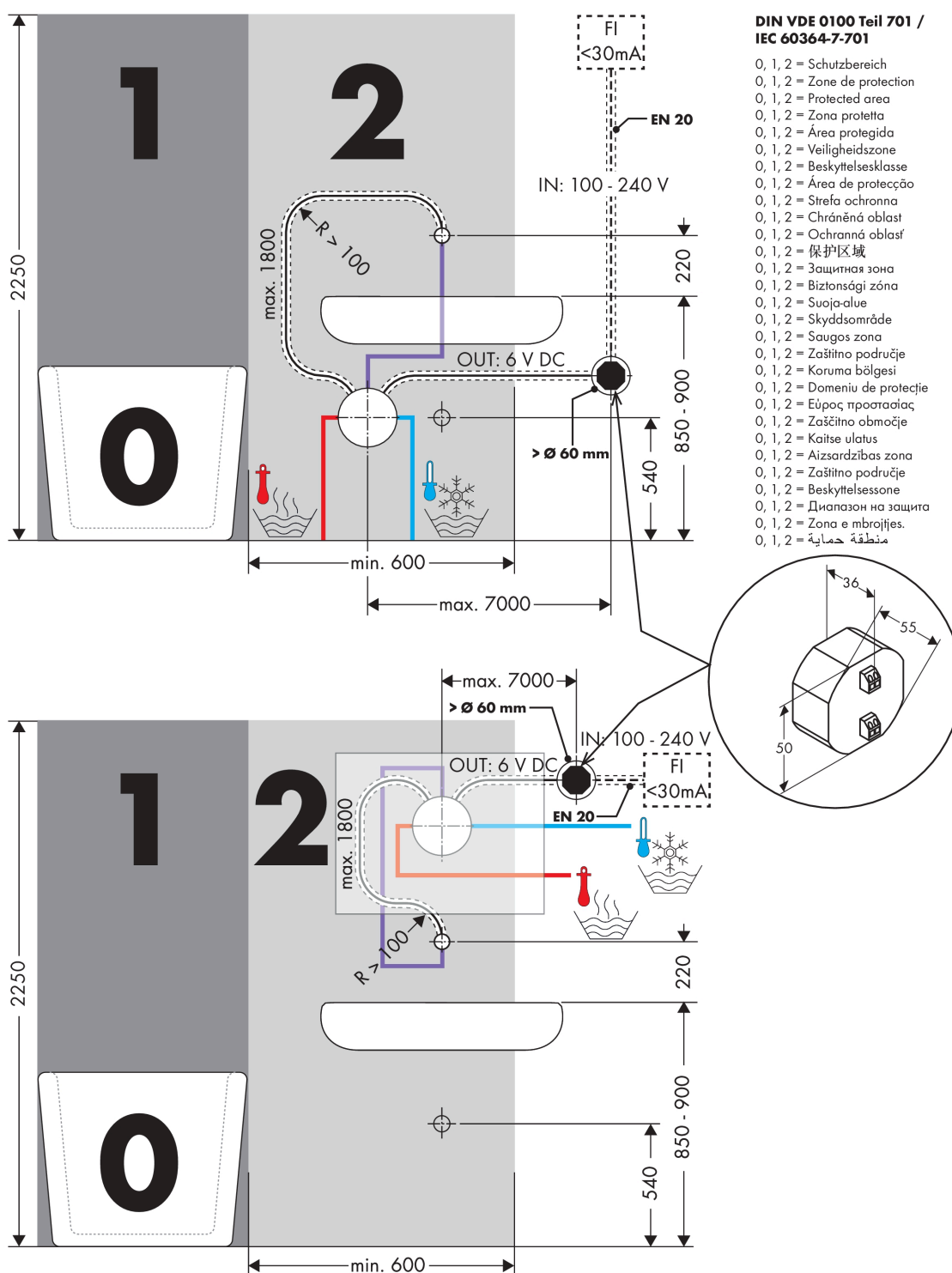
## AXOR Uno

Electronic basin mixer for concealed installation wall-mounted with spout 165 mm

Surfaces: **Chrome** Article Number: **38119000**



### Installation examples



## AXOR Uno

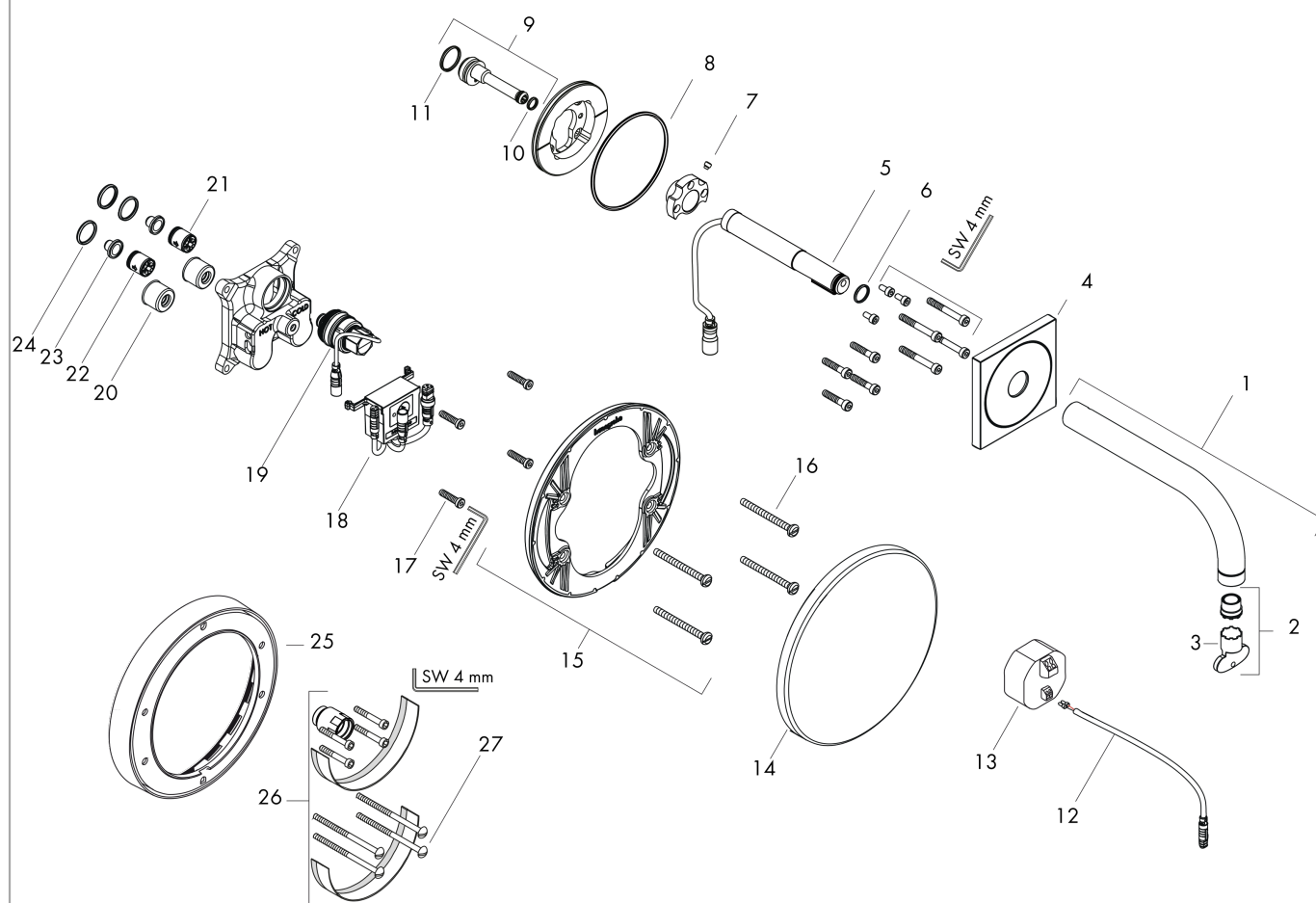
Electronic basin mixer for concealed installation wall-mounted with spout 165 mm

Surfaces: **Chrome** Article Number: **38119000**



### Exploded Drawing

Year of production: >01/12



## AXOR Uno

Electronic basin mixer for concealed installation wall-mounted with spout 165 mm

Surfaces: **Chrome** Article Number: **38119000**



### Spare part list

Year of production: >01/12

| Pos. | Description                                       | Article Number | PC | PU |
|------|---|----------------|----|----|
| 1    | spout 165 mm                                      | 95950000       | 0  | 1  |
| 2    | aerator laminar M16,5x1 (5 l/min)                 | 93118000       | 0  | 1  |
| 3    | special tool                                      | 98987000       | 0  | 1  |
| 4    | escutcheon  | 95943000       | 0  | 1  |
| 5    | electronics                                       | 95942000       | 0  | 1  |
| 6    | O-ring 12x1,5                                     | 98430000       | 0  | 1  |
| 7    | hollow set screw M6x6                             | 97660000       | 0  | 1  |
| 8    | O-ring 76x2,5                                     | 98431000       | 0  | 1  |
| 9    | connecting thread                                 | 92449000       | 0  | 1  |
| 10   | O-ring 7x1,5                                      | 98422000       | 0  | 1  |
| 11   | O-ring 17x1,5                                     | 98137000       | 0  | 1  |
| 12   | cable for illumination (12 V)                     | 95586000       | 0  | 1  |
| 13   | transformer                                       | 95945000       | 0  | 1  |
| 14   | escutcheon Ø 170 mm                               | 95946000       | 0  | 1  |
| 15   | sub plate   | 96447000       | 0  | 1  |
| 16   | set of fixing screws                              | 96454000       | 0  | 1  |
| 17   | set of screws                                     | 96525000       | 0  | 1  |
| 18   | control system                                    | 95947000       | 0  | 1  |
| 19   | solenoid valve 6 V                                | 96904000       | 0  | 1  |
| 20   | noise reduction                                   | 94073000       | 0  | 1  |
| 21   | set of non return valves DW 15                    | 94074000       | 0  | 1  |
| 22   | non return valve (pressure-resistant up to 2 MPa) | 92594000       | 0  | 1  |
| 23   | filter packing                                    | 95291000       | 0  | 1  |
| 24   | O-ring 16x2                                       | 98133000       | 0  | 1  |
| 25   | extension 22 mm (Ø 170 mm)                        | 13596000       | 0  | 1  |
| 26   | extension 25 mm                                   | 13594000       | 0  | 1  |
| 27   | set of fixing screws                              | 97747000       | 0  | 1  |
| a    | concealed item                                    | 16180180       | 0  | 1  |
| b    | cable extension set 5 m                           | 95997000       | 0  | 1  |
| c    | conversion kit with push button                   | 95977000       | 0  | 1  |
| d    | extension 25 mm                                   | 13595000       | 0  | 1  |