

**AXOR Uno**  
**Single lever basin mixer 70 with loop handle and waste set**  
 Surfaces: **Chrome**    Article Number: **38021000**

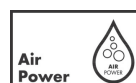


## Description

### product features

- consists of: single lever basin mixer, waste set
- ComfortZone 70
- projection 111 mm
- normal spray
- flow rate at 3 bar: 5 l/min
- ceramic cartridge
- temperature limitation adjustable
- suitable for continuous flow water heaters
- non-closing waste set
- connection type: G 3/8 connections
- connection dimension: DN15
- SVGW 1712-6707
- DVGW DW-6506CS0457
- P-IX 7287/IO
- ACS 18 ACC LY 832, valide jusqu'au 27.12.2023
- WRAS 1710014
- WRAS 1710014
- NSF Declaration 170099
- STA 1489

## Technology



## Design awards



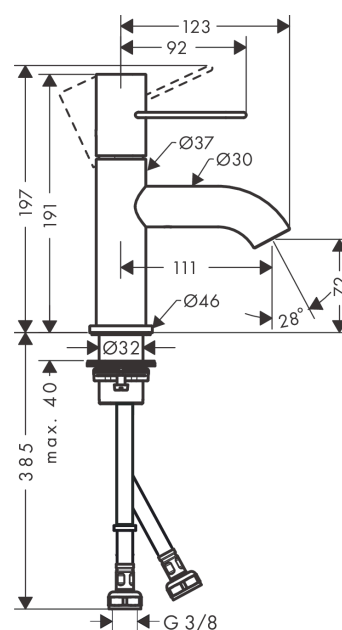
**AXOR Uno**  
**Single lever basin mixer 70 with loop handle and waste set**  
 Surfaces: **Chrome** Article Number: **38021000**



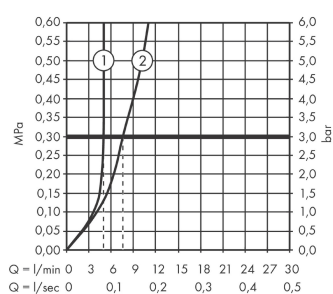
## Product image



## Scale drawing



## Flowchart



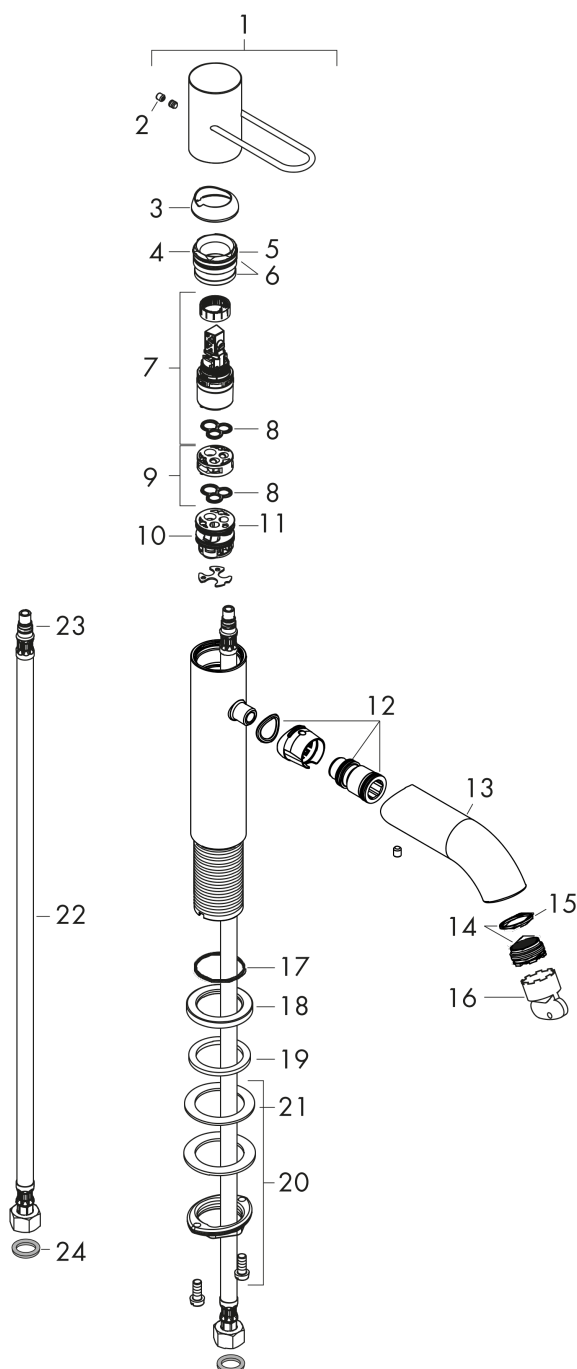
- ① With flow limiter
- ② Without flow limiter

**AXOR Uno**  
**Single lever basin mixer 70 with loop handle and waste set**  
 Surfaces: **Chrome**    Article Number: **38021000**



## Exploded Drawing

Year of production: >04/17



**AXOR Uno**  
**Single lever basin mixer 70 with loop handle and waste set**  
 Surfaces: **Chrome**    Article Number: **38021000**



## Spare part list

Year of production: >04/17

Pos.	Description	Article Number	PC	PU
1	handle	92886000	0	1
2	screw cover	95181000	0	1
3	flange	92625000	0	1
4	nut	92689000	0	1
5	O-ring 25x1,5	98146000	0	1
6	O-ring 27x1,5	92527000	0	1
7	cartridge, assy	97685000	0	1
8	seal	98865000	0	1
9	adapter for cartridge	92628000	0	1
10	adapter for cartridge	98866000	0	1
11	O-ring 23x2	98398000	0	1
12	O-ring 16x2	98133000	0	1
13	spout cpl.	92888000	0	1
14	aerator M24x1 (5 l/min)	92895000	0	1
15	O-ring 20x1,5	98197000	0	1
16	special tool	95290000	0	1
17	O-ring 30x1,5	98433000	0	1
18	escutcheon Ø 46 mm	95268000	0	1
19	flat seal	98749000	0	1
20	fixing set (Ø 32)	13961000	0	1
21	lever collar	97548000	0	1
22	connection hose 450 mm M8x0,75 G3/8	97206000	0	1
23	O-ring 7x1,5	98422000	0	1
24	sealing set	95581000	0	1
a	waste	50001000	0	1
b	fixation extension 35 mm	13898000	0	1