

AXOR ShowerSelect
Thermostat HighFlow for concealed installation round
 Surfaces: **Chrome** Article Number: **36721000**



Description

product features

- maximum flow rate at 0.3 MPa: 59 l/min
- thermostat cartridge
- safety lock at 40° C
- temperature limitation adjustable
- connection type: basic set
- SVGW 0607-5101
- P-IX 29611/II
- ACS 19 ACC LY 234, valide jusqu'au 05.11.2023
- NF_375-M1-19-5
- WRAS 1801028
- WRAS 1801028
- STA 1400

Design awards

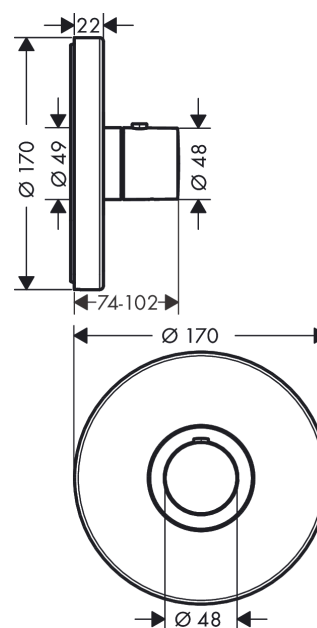


reddot award 2016
winner

Product image



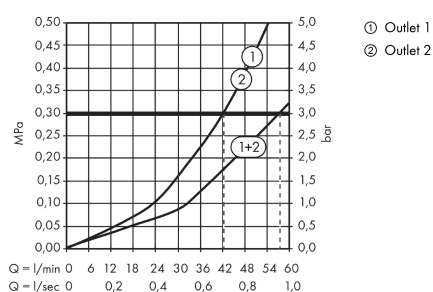
Scale drawing



AXOR ShowerSelect
Thermostat HighFlow for concealed installation round
 Surfaces: **Chrome** Article Number: **36721000**



Flowchart

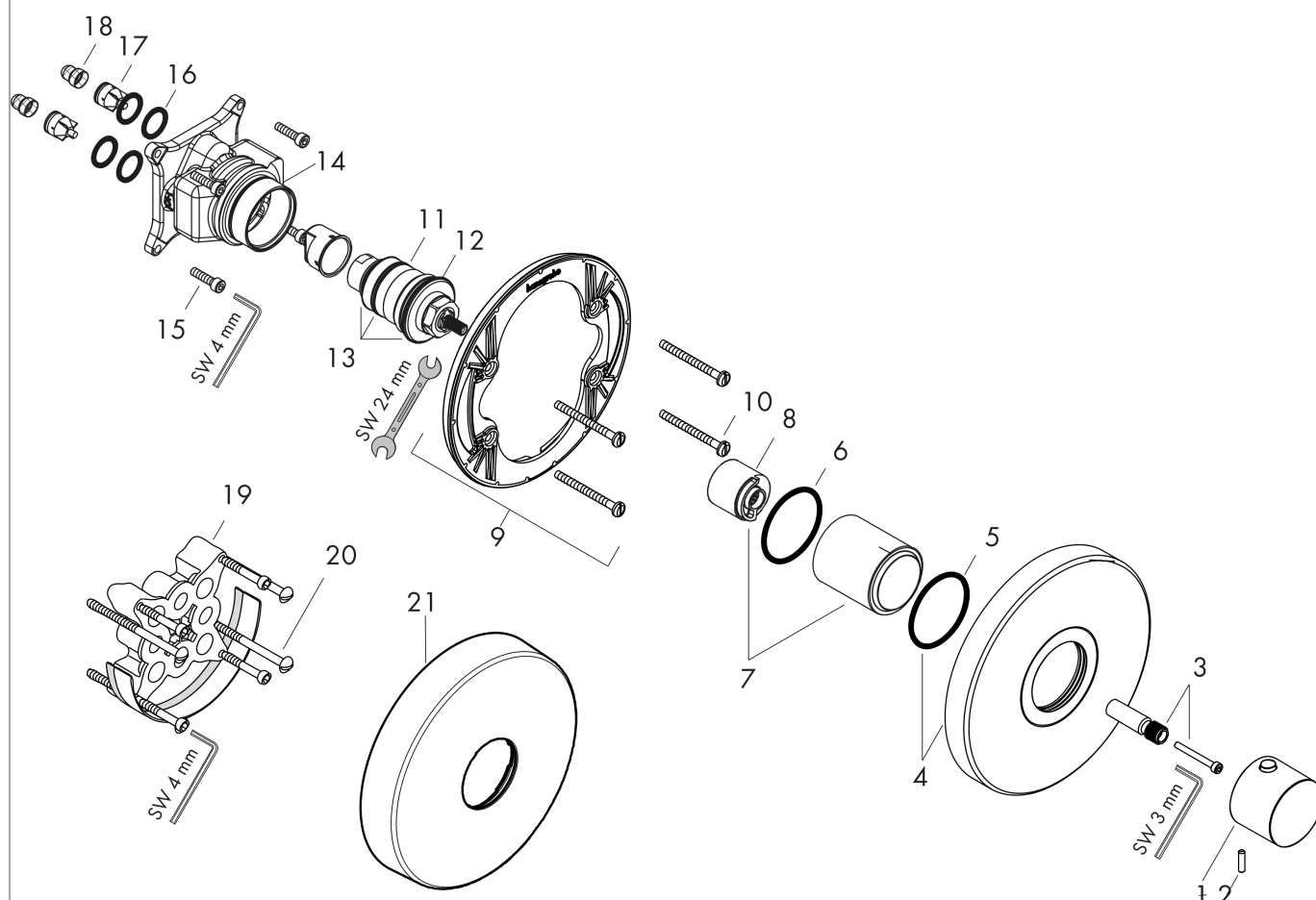


AXOR ShowerSelect
Thermostat HighFlow for concealed installation round
 Surfaces: **Chrome** Article Number: **36721000**



Exploded Drawing

Year of production: >05/15



AXOR ShowerSelect
Thermostat HighFlow for concealed installation round
 Surfaces: **Chrome** Article Number: **36721000**



Spare part list

Year of production: >05/15

Pos.	Description	Article Number	PC	PU
1	handle for thermostat	92534000	0	1
2	hollow set screw M4x16	97663000	0	1
3	adapter for handle	98701000	0	1
4	escutcheon Ø 170 mm	92664000	0	1
5	O-Ring 48x3	95508000	0	1
6	O-ring 45x1,5	92542000	0	1
7	sleeve	98679000	0	1
8	safety set for temperature control	97334000	0	1
9	sub plate	96447000	0	1
10	set of fixing screws	96454000	0	1
11	thermostat cartridge	96633000	0	1
12	O-ring 35x2	92604000	0	1
13	sealing set	96636000	0	1
14	O-ring 43x1,5	98148000	0	1
15	set of screws	96525000	0	1
16	O-ring 16x2	98133000	0	1
17	set of non return valves DW 15	97350000	0	1
18	filter	98513000	0	1
19	extension 25 mm	13595000	0	1
20	set of fixing screws	97747000	0	1
21	extension 22 mm (Ø 170 mm)	13596000	0	1
a	concealed item	01800180	0	1
b	adapter for exchanged connections	93181000	0	1