

**AXOR ShowerSelect**  
**Thermostat for concealed installation softcube for 1 function**  
 Surfaces: **Chrome** Article Number: **36705000**



## Description

### product features

- 1 outlet
- Select push-button on/off control for 1 outlet
- maximum flow rate at 0.3 MPa: 26 l/min
- thermostat cartridge
- safety lock at 40° C
- temperature limitation adjustable
- connection type: basic set
- Thermostat is delivered with button On/Off
- ETA VA 1.43/20477
- ACS 19 ACC LY 234, valide jusqu'au 05.11.2023
- NF\_375-M1-19-5
- WRAS 1503309
- JWWA E-565
- SINTEF 3153
- STA 1401

## Technology



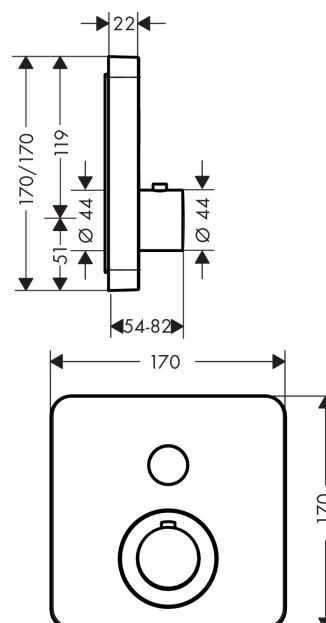
## Design awards



## Product image



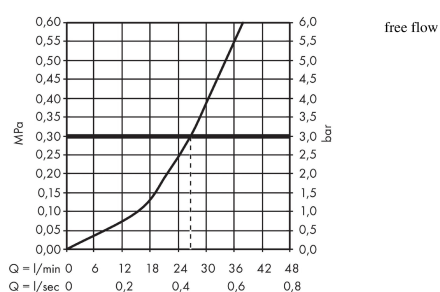
## Scale drawing



**AXOR ShowerSelect**  
**Thermostat for concealed installation softcube for 1 function**  
 Surfaces: **Chrome**    Article Number: **36705000**



## Flowchart

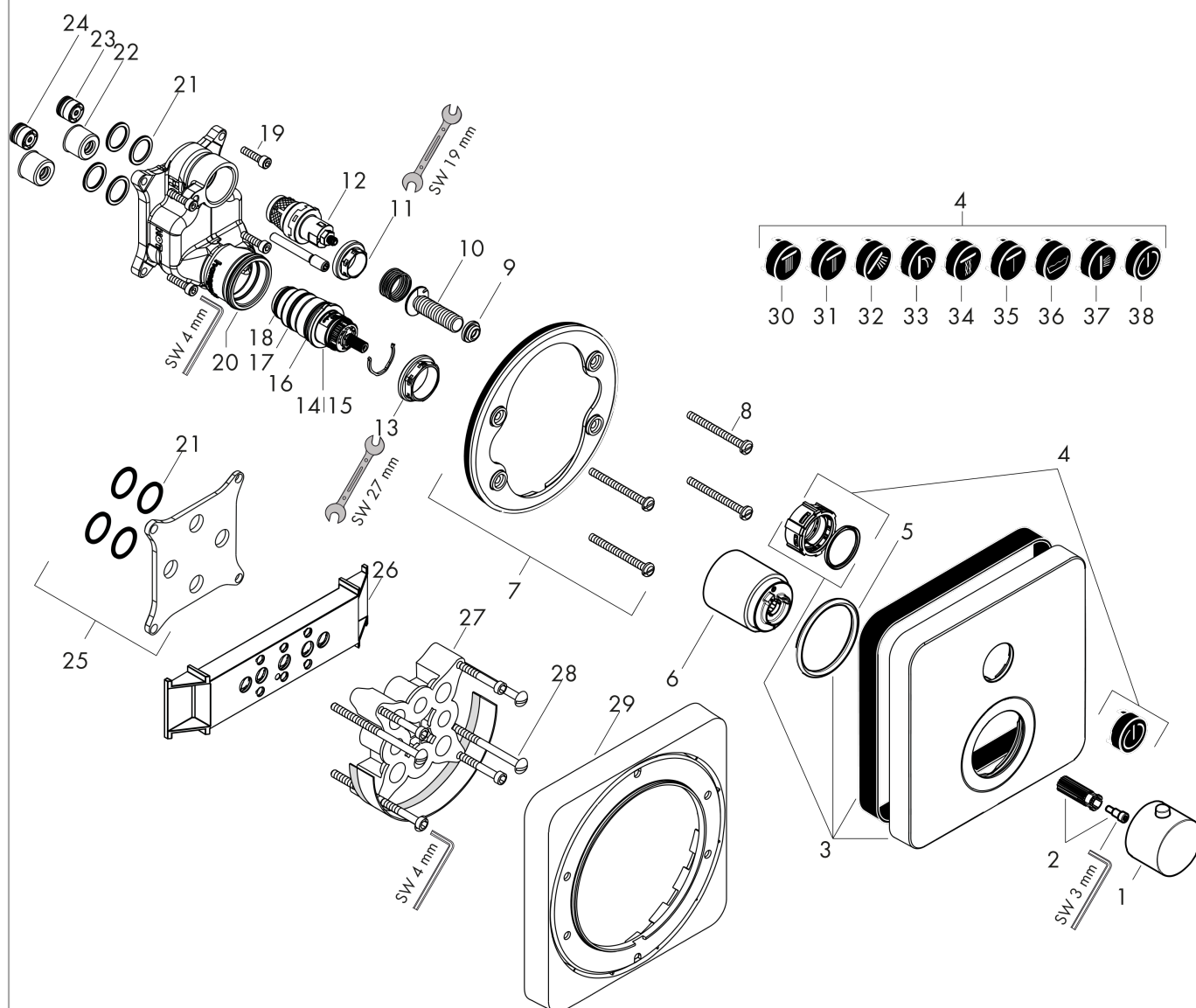


**AXOR ShowerSelect**  
**Thermostat for concealed installation softcube for 1 function**  
 Surfaces: **Chrome** Article Number: **36705000**



## Exploded Drawing

Year of production: >09/16



**AXOR ShowerSelect**  
**Thermostat for concealed installation softcube for 1 function**  
 Surfaces: **Chrome**    Article Number: **36705000**



## Spare part list

Year of production: >09/16

| Pos. | Description                                       | Article Number | PC | PU |
|------|---|----------------|----|----|
| 1    | handle for thermostat                             | 92840000       | 0  | 1  |
| 2    | handle fixing set                                 | 95843000       | 0  | 1  |
| 3    | escutcheon 170 / 170 mm                           | 93026000       | 0  | 1  |
| 4    | set of symbols                                    | 92544610       | 0  | 1  |
| 5    | O-ring 48x4                                       | 98414000       | 0  | 1  |
| 6    | sleeve  | 92216000       | 0  | 1  |
| 7    | holder for escutcheon                             | 98793000       | 0  | 1  |
| 8    | set of fixing screws                              | 96454000       | 0  | 1  |
| 9    | nut and flange                                    | 92696000       | 0  | 1  |
| 10   | Select-adapter                                    | 92219000       | 0  | 1  |
| 11   | nut   | 98368000       | 0  | 1  |
| 12   | shut off unit                                     | 95758000       | 0  | 1  |
| 13   | nut   | 98913000       | 0  | 1  |
| 14   | thermostat cartridge                              | 98282000       | 0  | 1  |
| 15   | cartridge for exchanged connections               | 92373000       | 0  | 1  |
| 16   | O-ring 25x2,5                                     | 92146000       | 0  | 1  |
| 17   | O-ring 25x1,5                                     | 98146000       | 0  | 1  |
| 18   | O-ring 20x1,5                                     | 98197000       | 0  | 1  |
| 19   | set of screws                                     | 96525000       | 0  | 1  |
| 20   | O-ring 36x2                                       | 98156000       | 0  | 1  |
| 21   | O-ring 16x2                                       | 98133000       | 0  | 1  |
| 22   | noise reduction                                   | 94073000       | 0  | 1  |
| 23   | non return valve                                  | 97980000       | 0  | 1  |
| 24   | non return valve (pressure-resistant up to 2 MPa) | 92594000       | 0  | 1  |
| 25   | compensation set 1°                               | 95521000       | 0  | 1  |
| 26   | fit-up aid  | 92540000       | 0  | 1  |
| 27   | extension 25 mm                                   | 13595000       | 0  | 1  |
| 28   | set of fixing screws                              | 97747000       | 0  | 1  |
| 29   | extension 22 mm                                   | 98860000       | 0  | 1  |
| 30   | symbol head shower Rain large                     | 93571610       | 0  | 1  |
| 31   | symbol head shower Rain small                     | 93572610       | 0  | 1  |
| 32   | symbol handshower                                 | 93573610       | 0  | 1  |
| 33   | symbol Flood jet                                  | 93574610       | 0  | 1  |
| 34   | symbol Whirl                                      | 93575610       | 0  | 1  |

**AXOR ShowerSelect**  
**Thermostat for concealed installation softcube for 1 function**  
 Surfaces: **Chrome**    Article Number: **36705000**



## Spare part list

Year of production: >09/16

| Pos. | Description                       | Article Number | PC | PU |
|------|-----------------------------------|----------------|----|----|
| 35   | symbol Mono                       | 93576610       | 0  | 1  |
| 36   | symbol tub                        | 93577610       | 0  | 1  |
| 37   | symbol body shower                | 93578610       | 0  | 1  |
| 38   | symbol ON/OFF                     | 93579610       | 0  | 1  |
| a    | concealed item                    | 01800180       | 0  | 1  |
| b    | adapter for exchanged connections | 93181000       | 0  | 1  |
| c    | fixation set                      | 96615000       | 0  | 1  |