

AXOR Citterio E
Bath thermostat for exposed installation
 Surfaces: **Chrome** Article Number: **36140000**



Description

product features

- projection 177 mm
- 2 outlets
- will not run two outlets at same time
- centre distance: 150 ± 16 mm
- spray type mixer: normal spray
- flow rate: 20 l/min
- thermostat cartridge, shut-off/ diverter valve
- min. operating pressure: 1 bar
- max. operating pressure: 10 bar
- safety lock at 40° C
- temperature limitation adjustable
- non-return valve
- with silencer
- connection type: s-shaped connections
- connection dimension: DN15
- PA-IX 18987/ICB
- ACS 19 ACC NY 085, valide jusqu'au 15.05.2024
- WRAS 1507303
- JWWA C-279
- STA 1377
- Agréé Belgaqua

Technology



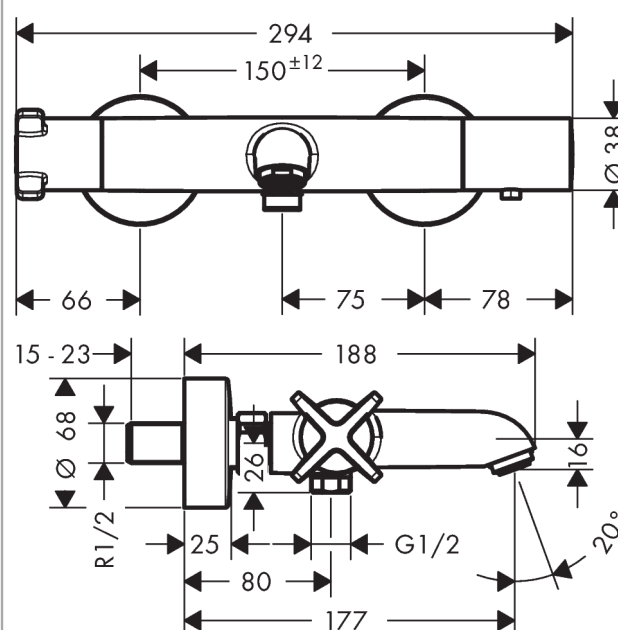
AXOR Citterio E
Bath thermostat for exposed installation
 Surfaces: **Chrome** Article Number: **36140000**



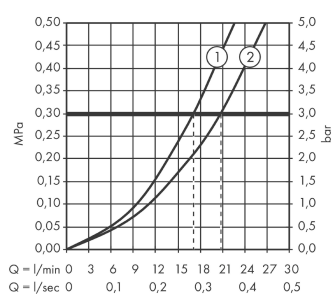
Product image



Scale drawing



Flowchart



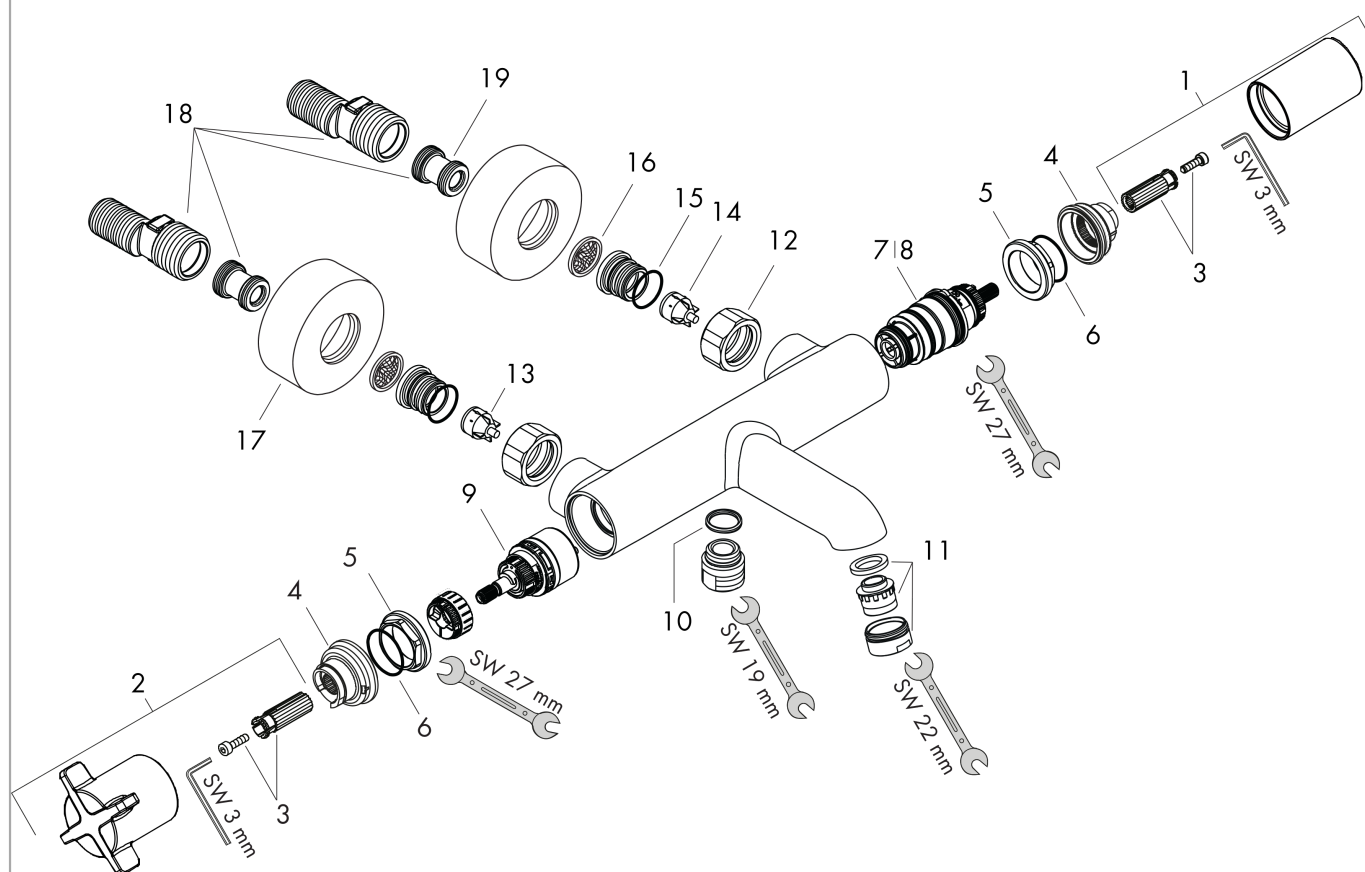
- ① Shower outlet with 1B-resistance
- ② Tub outlet

AXOR Citterio E
Bath thermostat for exposed installation
 Surfaces: **Chrome** Article Number: **36140000**



Exploded Drawing

Year of production: >11/14



AXOR Citterio E
Bath thermostat for exposed installation
 Surfaces: **Chrome** Article Number: **36140000**



Spare part list

Year of production: >11/14

Pos.	Description	Article Number	PC	PU
1	handle for thermostat	98287000	0	1
2	handle	92362000	0	1
3	handle fixing set	98290000	0	1
4	safety set	98289000	0	1
5	nut	98913000	0	1
6	O-ring 26x1,5	98390000	0	1
7	thermostat cartridge	98282000	0	1
8	cartridge for exchanged connections	92373000	0	1
9	shut off unit with selector	98283000	0	1
10	O-ring 14x2	98129000	0	1
11	aerator M24x1 (25 l/min)	13956000	0	1
12	set of nuts	96157000	0	1
13	non return valve (pressure-resistant up to 2 MPa)	93136000	0	1
14	non return valve	96737000	0	1
15	O-ring 17x1,5	98137000	0	1
16	filter packing	96922000	0	1
17	escutcheon Ø 68 mm	96467000	0	1
18	set of S-unions (±12 mm)	94140000	0	1
19	noise reduction	96429000	0	1
a	set of S-unions (±32 mm)	98592000	0	1