

AXOR Citterio E

Single lever basin mixer for concealed installation wall-mounted with spout 221 mm and plate

Surfaces: **Chrome** Article Number: **36114000**



Description

product features

- consists of: single lever basin mixer for concealed installation wall-mounted, waste set
- projection 221 mm
- laminar spray
- flow rate at 3 bar: 5 l/min
- joystick ceramic cartridge
- suitable for continuous flow water heaters
- non-closing waste set
- connection type: basic set
- handle can be positioned on the right or left, depends on the basic set installation
- P-IX 28534/IO
- ETA VA 1.42/19221
- GDV 04/00135
- WRAS 1502005
- JWWA C-278
- Kiwa K6161_Mechanical Mixers EN817
- SINTEF 1437
- STA 1395
- WELS SGP 1 Tick BST-2015/017630

Technology



AXOR Citterio E

Single lever basin mixer for concealed installation wall-mounted with spout 221 mm and plate

Surfaces: **Chrome**

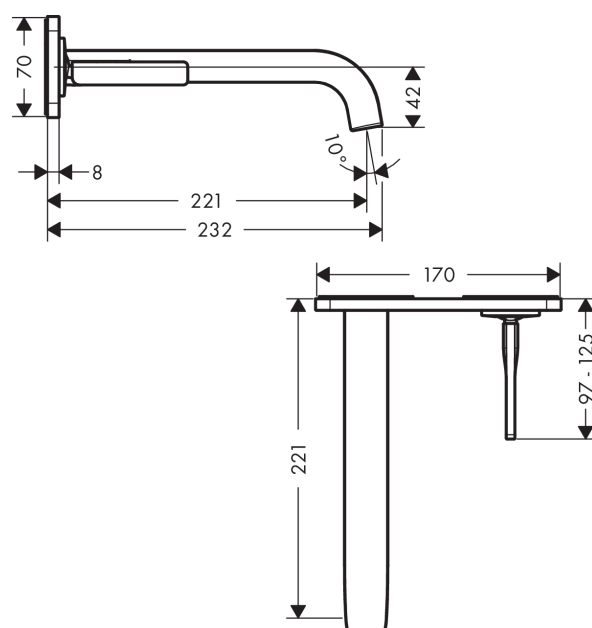
Article Number: **36114000**



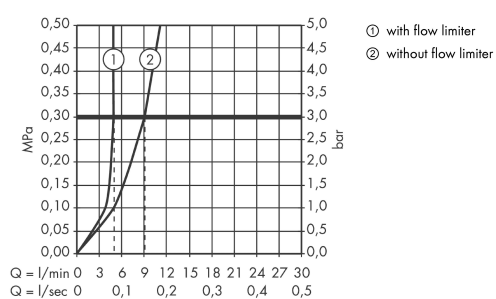
Product image



Scale drawing



Flowchart



AXOR Citterio E

Single lever basin mixer for concealed installation wall-mounted with spout 221 mm and plate

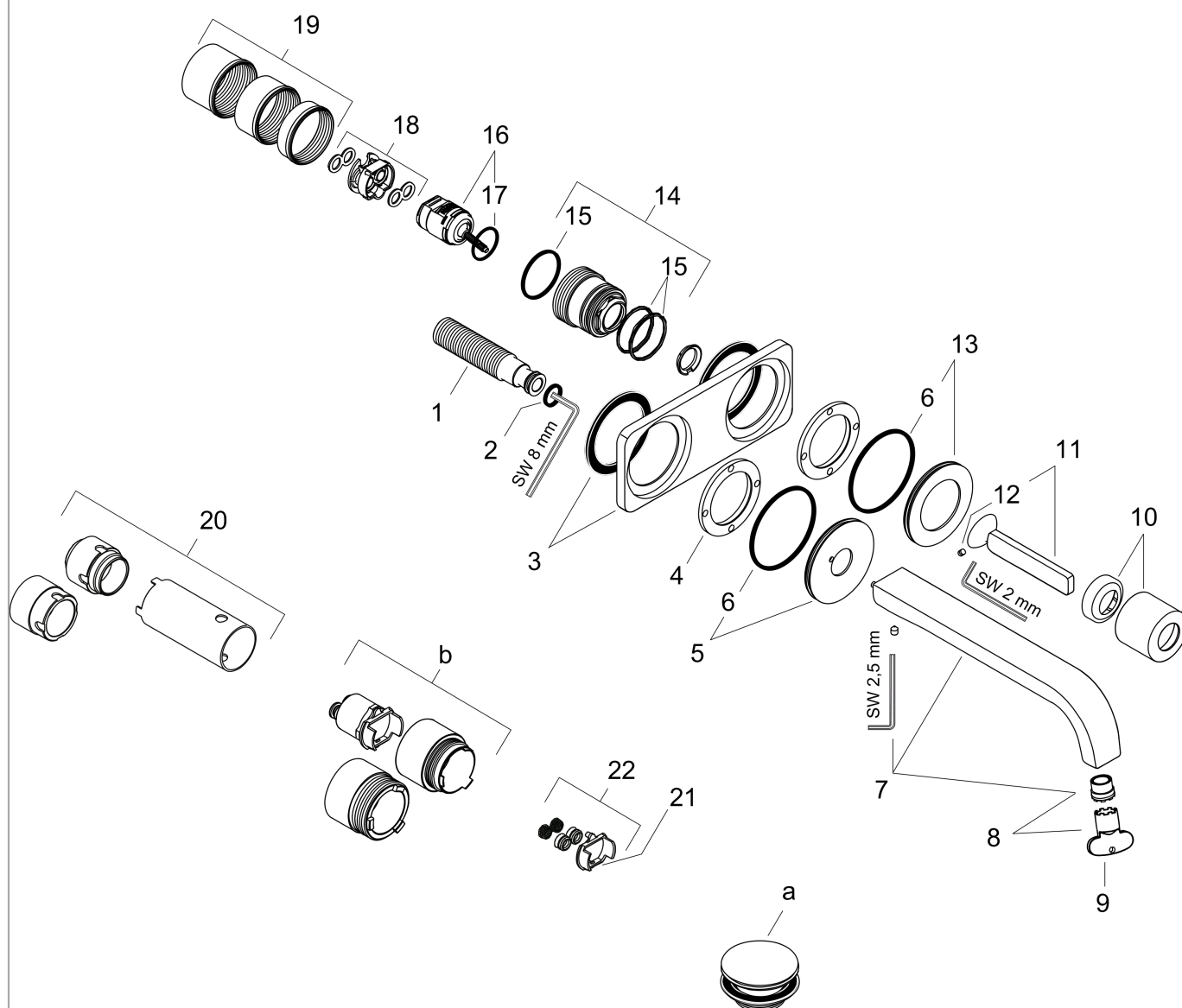
Surfaces: **Chrome**

Article Number: **36114000**



Exploded Drawing

Year of production: >12/14



AXOR Citterio E

Single lever basin mixer for concealed installation wall-mounted with spout 221 mm and plate

Surfaces: **Chrome**

Article Number: **36114000**



Spare part list

Year of production: >12/14

Pos.	Description	Article Number	PC	PU
1	connecting thread G½	95626000	0	1
2	O-ring 13x2	98128000	0	1
3	escutcheon	92496000	0	1
4	nut	97601000	0	1
5	escutcheon for spout	93097000	0	1
6	O-ring 57x2,5	98394000	0	1
7	spout 220 mm	92336000	0	1
8	aerator laminar M16,5x1 (5 l/min)	95382000	0	1
9	special tool	98987000	0	1
10	flange	95776000	0	1
11	handle	92335000	0	1
12	hollow set screw M4x6	97767000	0	1
13	escutcheon for handle	96912000	0	1
14	nut	95777000	0	1
15	O-ring 34x2	98383000	0	1
16	cartridge, assy	96339000	0	1
17	O-ring 21,95x1,78	95169000	0	1
18	adapter for cartridge	95644000	0	1
19	fixing set	97971000	0	1
20	extension set 25 mm for 13622180	31971000	0	1
21	conversion kit	95643000	0	1
22	adapter for cartridge	97280000	0	1
a	waste	50001000	0	1
b	extension set for 38111180	38982000	0	1
c	base body	13622180	0	1