

AXOR Citterio E

Single lever basin mixer 90 with lever handle for hand washbasins with waste set

Surfaces: **Chrome** Article Number: **36112000**



Description

product features

- consists of: single lever basin mixer, waste set
- ComfortZone 90
- projection 135 mm
- laminar spray
- flow rate at 3 bar: 5 l/min
- ceramic cartridge
- temperature limitation adjustable
- suitable for continuous flow water heaters
- non-closing waste set
- connection type: G ¾ connections
- connection dimension: DN15
- P-IX 28578/IO
- ETA VA 1.42/17813
- ACS 17 ACC LY 654, valide jusqu'au 20.06.2022
- NF_375-M1-19-6
- WRAS 1507305
- Kiwa K6161_Mechanical Mixers EN817
- SINTEF 1834
- STA 1370
- WELS SGP 1 Tick BST-2016/019856

Technology



Design awards



reddot award 2015
winner



reddot award 2016
winner

AXOR Citterio E

Single lever basin mixer 90 with lever handle for hand washbasins with waste set

Surfaces: **Chrome**

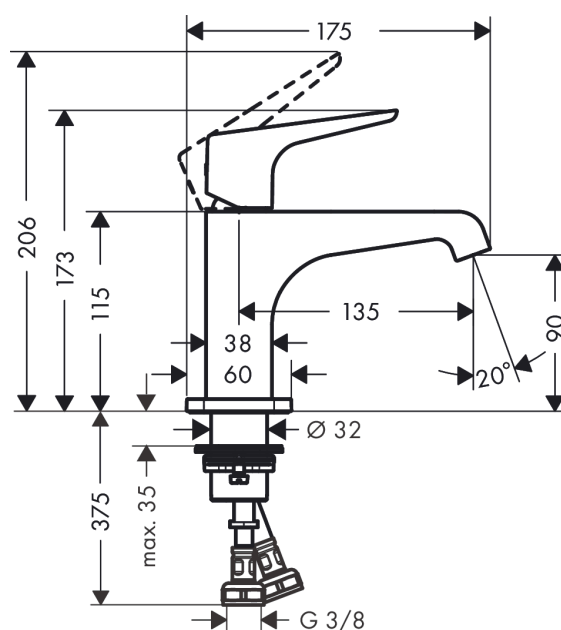
Article Number: **36112000**



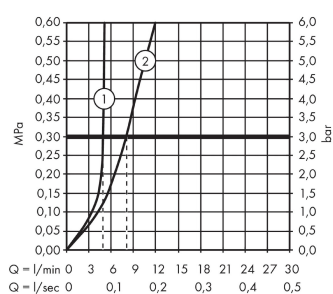
Product image



Scale drawing



Flowchart

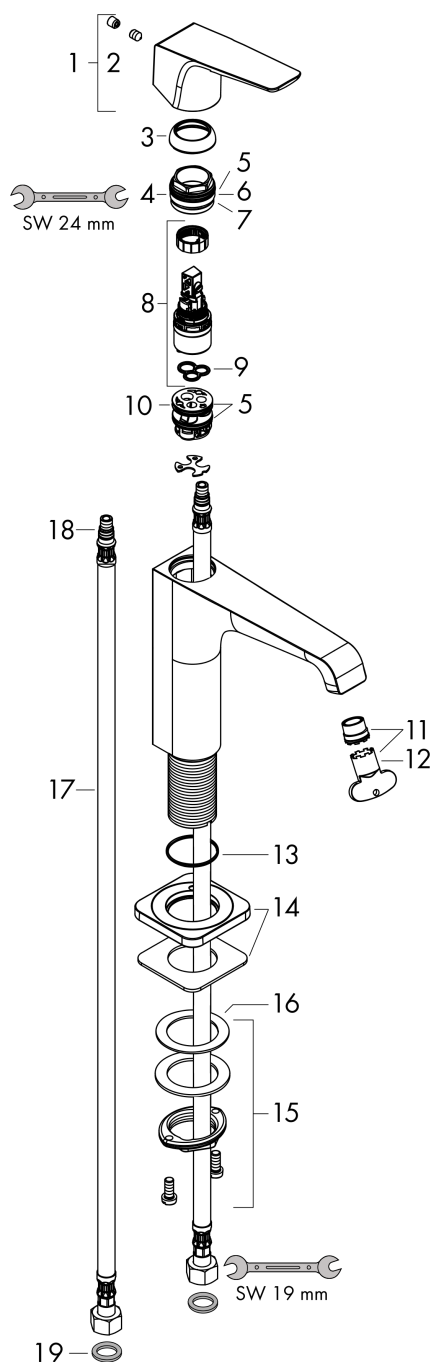


AXOR Citterio E
Single lever basin mixer 90 with lever handle for hand washbasins with waste set
 Surfaces: **Chrome** Article Number: **36112000**



Exploded Drawing

Year of production: >02/16



AXOR Citterio E

Single lever basin mixer 90 with lever handle for hand washbasins with waste set

Surfaces: **Chrome** Article Number: **36112000**



Spare part list

Year of production: >02/16

Pos.	Description	Article Number	PC	PU
1	handle	92593000	0	1
2	screw cover	96762000	0	1
3	flange	98863000	0	1
4	nut	98864000	0	1
5	O-ring 23x2	98398000	0	1
6	O-ring 27x1,5	92527000	0	1
7	O-ring 25x1,5	98146000	0	1
8	cartridge, assy	97685000	0	1
9	seal	98865000	0	1
10	adapter for cartridge	98866000	0	1
11	aerator laminar M16,5x1 (5 l/min)	95382000	0	1
12	special tool	98987000	0	1
13	O-ring 30x1,5	98433000	0	1
14	escutcheon	92190000	0	1
15	fixing set (Ø 32)	13961000	0	1
16	lever collar	97548000	0	1
17	connection hose 450 mm M8x0,75 G3/8	97206000	0	1
18	O-ring 7x1,5	98422000	0	1
19	sealing set	95581000	0	1
a	waste	50001000	0	1
b	fixation extension 35 mm	13898000	0	1