

AXOR Citterio E
3-hole basin mixer 170 with escutcheons and pop-up waste set
 Surfaces: **Chrome** Article Number: **36108000**



Description

product features

- consists of: 3-hole basin mixer, waste set
- ComfortZone 170
- projection 165 mm
- normal spray
- flow rate at 3 bar: 5 l/min
- ceramic valves hot/ cold 180°
- suitable for continuous flow water heaters
- pop-up waste set G 1¼
- connection type: G ¾ connections
- connection dimension: DN15
- SVGW 1508-6411
- DVGW DW-6501CQ0609
- P-IX 28535/IO
- ACS 18 ACC NY 145, valide jusqu'au 17.05.2023
- WRAS 1507008
- JWWA C-501
- Kiwa K6110_Mechanical Mixers EN200
- NSF Declaration C140626
- STA 1426

Technology



Design awards



AXOR Citterio E

3-hole basin mixer 170 with escutcheons and pop-up waste set

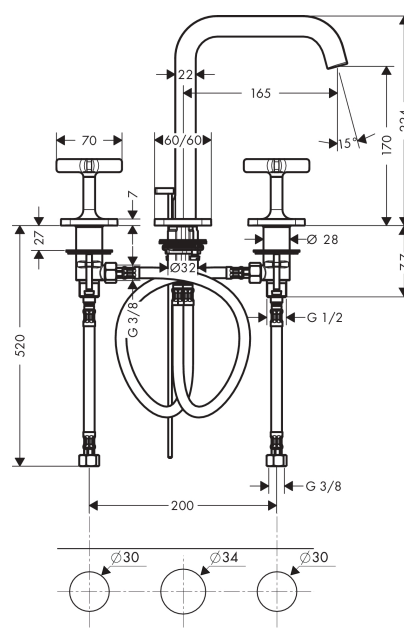
Surfaces: **Chrome** Article Number: **36108000**



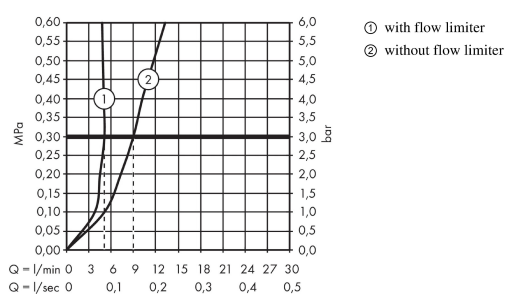
Product image



Scale drawing



Flowchart

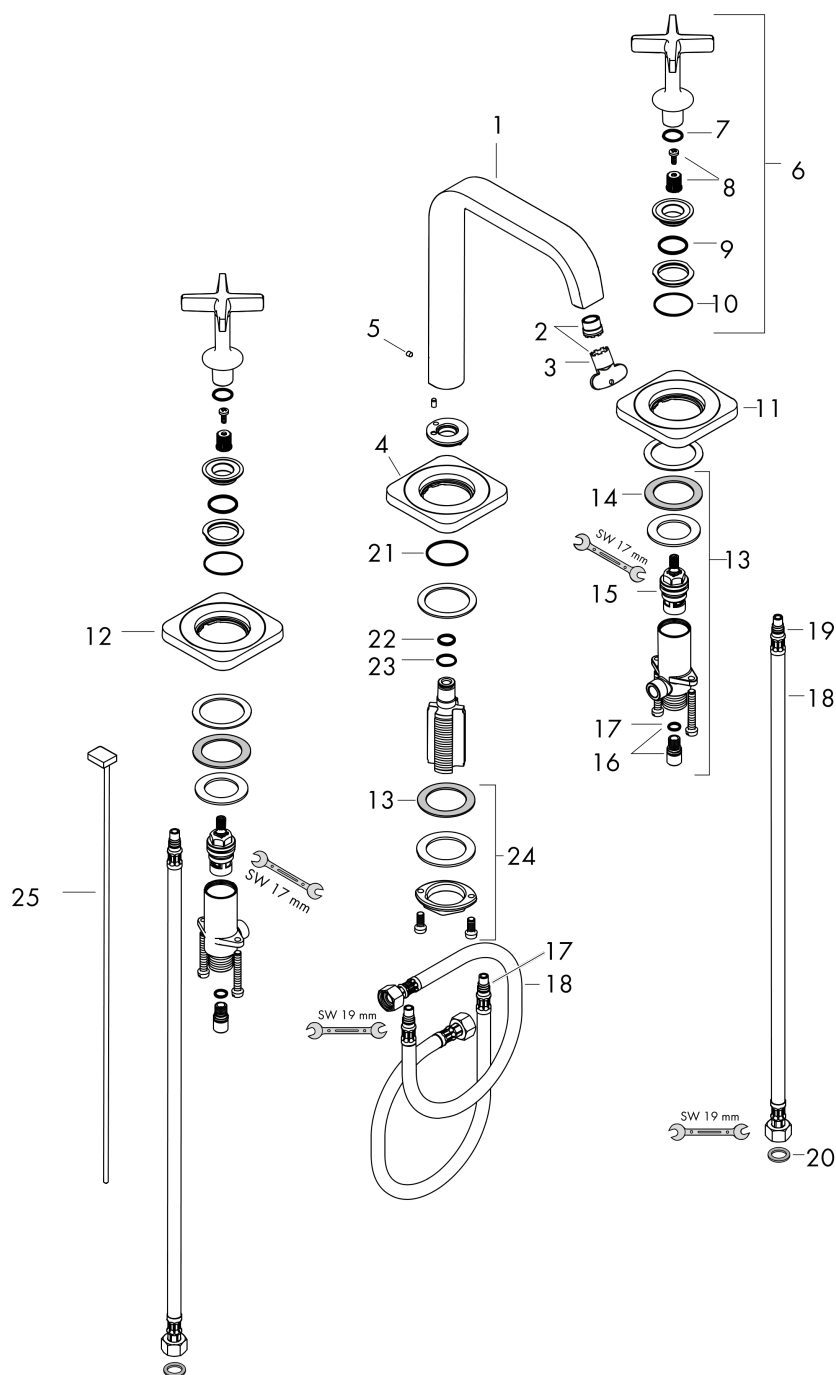


AXOR Citterio E
3-hole basin mixer 170 with escutcheons and pop-up waste set
 Surfaces: **Chrome** Article Number: **36108000**



Exploded Drawing

Year of production: >12/14



AXOR Citterio E
3-hole basin mixer 170 with escutcheons and pop-up waste set
 Surfaces: **Chrome** Article Number: **36108000**



Spare part list

Year of production: >12/14

Pos.	Description	Article Number	PC	PU
1	spout cpl.	92394000	0	1
2	aerator laminar M16,5x1 (5 l/min)	95382000	0	1
3	special tool	98987000	0	1
4	escutcheon	98930000	0	1
5	hollow set screw M4x5	92846000	0	1
6	handle	92396000	0	1
7	O-ring 13x2	98128000	0	1
8	handle fixing set	98932000	0	1
9	O-ring 21x2	98205000	0	1
10	O-ring 30x1,5	98433000	0	1
11	escutcheon cold water	92398000	0	1
12	escutcheon hot water	92397000	0	1
13	stop valve cpl.	97357000	0	1
14	lever collar	97548000	0	1
15	shut off unit	94149000	0	1
16	set of connecting threads	98350000	0	1
17	O-ring 8x1,5	98423000	0	1
18	connection hose 450 mm M8x0,75 G3/8	97206000	0	1
19	O-ring 7x1,5	98422000	0	1
20	sealing set	95581000	0	1
21	O-ring 29x1,5	92738000	0	1
22	O-ring 11x2	98127000	0	1
23	O-Ring 14x1,5	98201000	0	1
24	fixing set (Ø 32)	13961000	0	1
25	pop up rod	92395000	0	1
a	fixation extension 35 mm	13898000	0	1
b	pop up waste	94139000	0	1