

AXOR ShowerSolutions

Overhead shower 460/300 1jet with shower arm and softcube escutcheon

Surfaces: **Chrome** Article Number: **35274000**



Description

product features

- shower head size: 460 x 270 mm
- shower arm length: 460 mm
- spray type: Rain
- maximum flow rate at 0.3 MPa: 19 l/min
- flow rate Rain spray (at 0.3 MPa): 19 l/min
- material spray disc: metal
- spray disc removable for cleaning
- overhead shower for cleaning removable
- installation: wall
- connection thread G ½
- connection dimension: DN15
- Reg 4 170446
- REG 4 170446

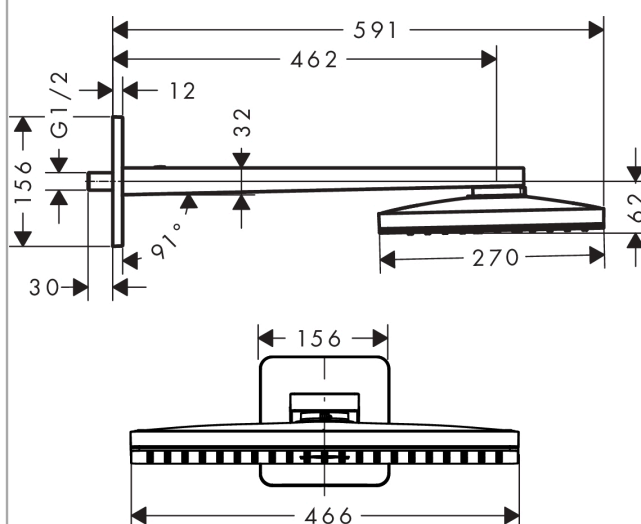
Technology



Product image



Scale drawing



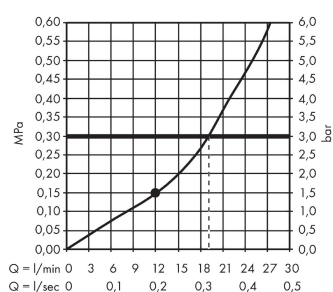
AXOR ShowerSolutions

Overhead shower 460/300 1jet with shower arm and softcube escutcheon

Surfaces: **Chrome** Article Number: **35274000**



Flowchart



The consumption was measured in combination with the appropriate fittings (thermostat/mixer/in-wall valve) to reflect actual application in practice.

AXOR ShowerSolutions

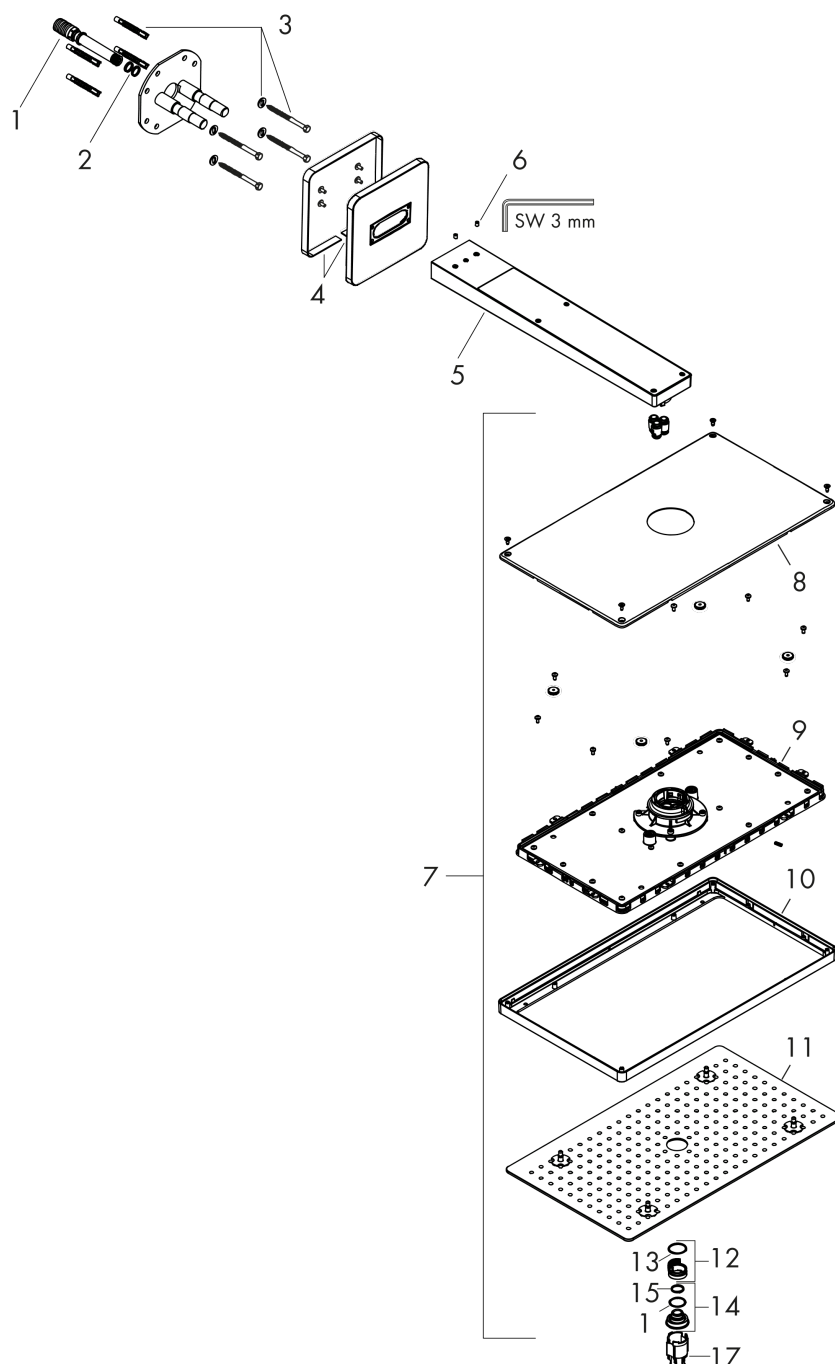
Overhead shower 460/300 1jet with shower arm and softcube escutcheon

Surfaces: **Chrome** Article Number: **35274000**



Exploded Drawing

Year of production: >07/17



AXOR ShowerSolutions

Overhead shower 460/300 1jet with shower arm and softcube escutcheon

Surfaces: **Chrome** Article Number: **35274000**



Spare part list

Year of production: >07/17

Pos.	Description	Article Number	PC	PU
1	connecting thread G½	92699000	0	1
2	O-ring 12x2	98214000	0	1
3	mounting set	98716000	0	1
4	escutcheon 155 / 155 mm	93204000	0	1
5	hollow set screw M5x8	92851000	0	1
6	shower arm	92701000	0	1
7	head shower	93205000	0	1
8	cover	93392000	0	1
9	cartridge, assy	93388000	0	1
10	frame	93390000	0	1
11	spray body	93206000	0	1
12	filter	92683000	0	1
13	O-ring 24x2	98388000	0	1
14	spray insert	93207000	0	1
15	O-ring 15x2	98163000	0	1
16	O-ring 21x2	98205000	0	1
17	special tool	92686000	0	1