

## AXOR Starck

### Baton hand shower 2jet

Surfaces: **Brushed Black Chrome**

Article Number: **28532340**



## Description

### product features

- spray type adjustment by turning spray disc
- spray type: Rain, MonoRain
- flow rate at 3 bar: 16 l/min
- metal cover
- rinseable dirt filter
- connection thread G ½
- connection dimension: DN15
- suitable for continuous flow water heaters
- suitable for rim-/ tile-mounted mixers
- SVGW 0506-4976
- DVGW NW-6517BR0047
- P-IX 9990/IB
- ACS 14 ACC NY 328, valide jusqu'au 23.10.2019
- WRAS 1805023
- WRAS 1805023
- Kiwa K6053\_Showers
- Kiwa K6053\_Showers
- Kiwa K6053\_Showers
- REG 4 170637

## Technology



## AXOR Starck

### Baton hand shower 2jet

Surfaces: **Brushed Black Chrome**

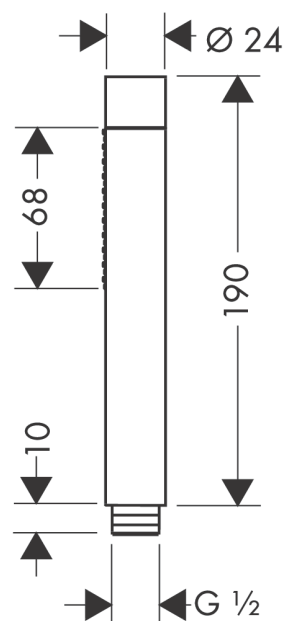
Article Number: **28532340**



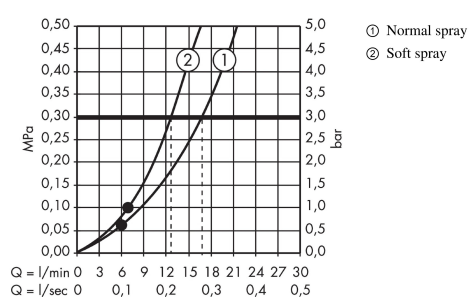
## Product image



## Scale drawing



## Flowchart

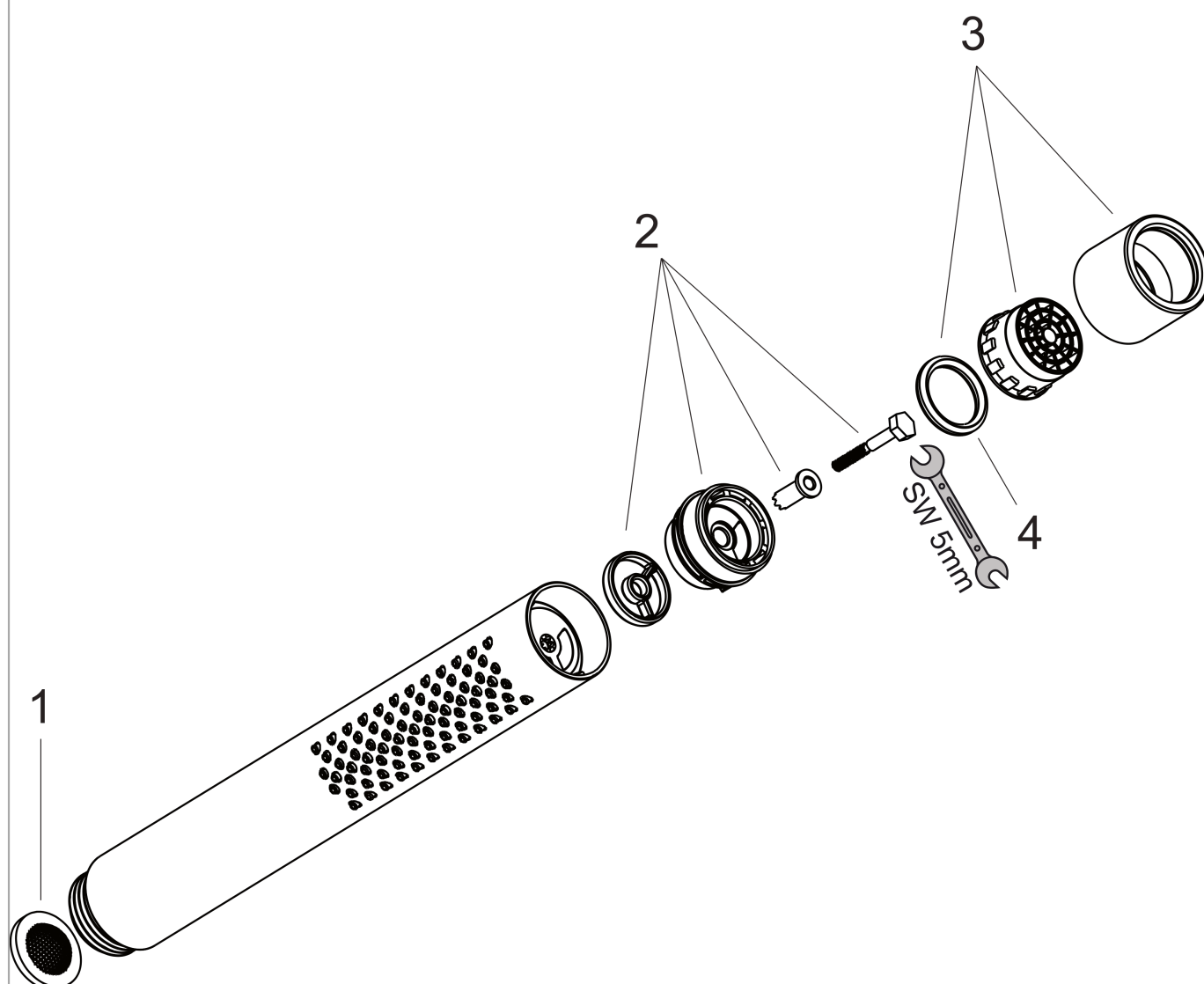


The consumption was measured in combination with the appropriate fittings (thermostat/mixer/in-wall valve) to reflect actual application in practice.

**AXOR Starck**  
**Baton hand shower 2jet**  
 Surfaces: **Brushed Black Chrome**    Article Number: **28532340**

## Exploded Drawing

Year of production: >11/16



**AXOR Starck**  
**Baton hand shower 2jet**  
 Surfaces: **Brushed Black Chrome**    Article Number: **28532340**



## Spare part list

Year of production: >11/16

Pos.	Description	Article Number	PC	PU
1	filter packing	94246000	0	1
2	selector assy	95511000	0	1
3	spray former	95411340	0	1
4	O-Ring 14x2,5	98189000	0	1
a	flow-restrictor-set	92019000	0	1