

AXOR ShowerSolutions

Showerpipe with thermostat 800 and overhead shower 350 1jet

Surfaces: **Stainless Steel Optic** Article Number: **27984800**



Description

product features

- consists of: overhead shower, baton hand shower, shower thermostat, shower hose, shower holder
- 90° position adjustable slider, pivots left and right, up and down
- simultaneous utilization by 2 outlets
- overhead shower AXOR overhead shower 350 1jet
- shower head size: 350 mm
- shelf made of safety glass
- shelf finish: chrome
- spray type: PowderRain
- flow rate PowderRain spray (at 0.3 MPa): 22 l/min
- shower arm length: 400 mm
- swivel shower arm
- thermostat AXOR thermostatic mixer 800
- safety lock at 40° C
- adjustable hot water limitation
- convenient diversion via Select button
- installation type: exposed installation
- connection dimension DN15
- connection thread G ½
- centre distance 150 ± 12 mm
- ACS 17 ACC LY 462, valide jusqu'au 03.08.2022
- JWWA C-279

Technology



Design awards



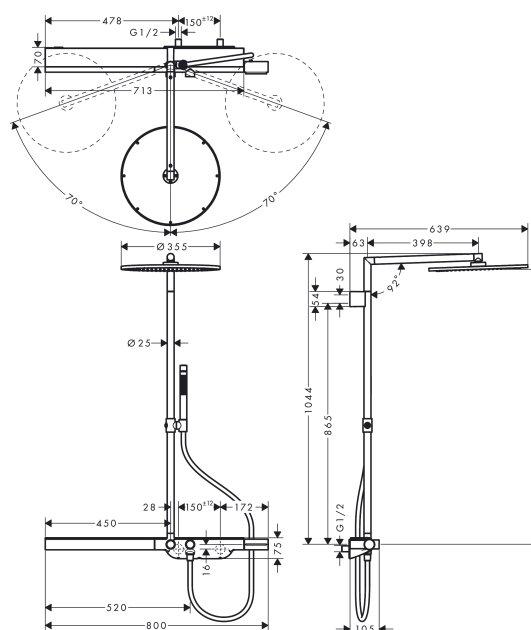
AXOR ShowerSolutions
Showerpipe with thermostat 800 and overhead shower 350 1jet
Surfaces: **Stainless Steel Optic** Article Number: **27984800**



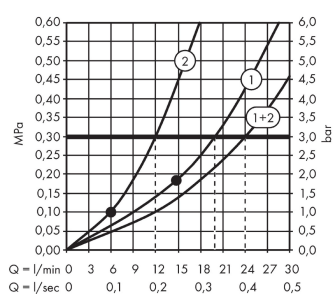
Product image



Scale drawing



Flowchart



- ① Overhead shower
- ② Hand shower



Technical drawing of a shower head and arm assembly, showing front and side views with dimensions.

Front View (Left):

- Shower head diameter: $\varnothing 355$
- Arm diameter: $\varnothing 25$
- Distance from wall to shower head center: 450
- Distance from wall to shower head center (alternative): 520
- Distance from wall to shower head center (alternative): 800
- Distance from shower head center to shower head base: 150 ± 12
- Distance from shower head center to shower head base (alternative): 172
- Distance from shower head center to shower head base (alternative): 28
- Distance from shower head center to shower head base (alternative): 16
- Distance from shower head center to shower head base (alternative): 75

Side View (Right):

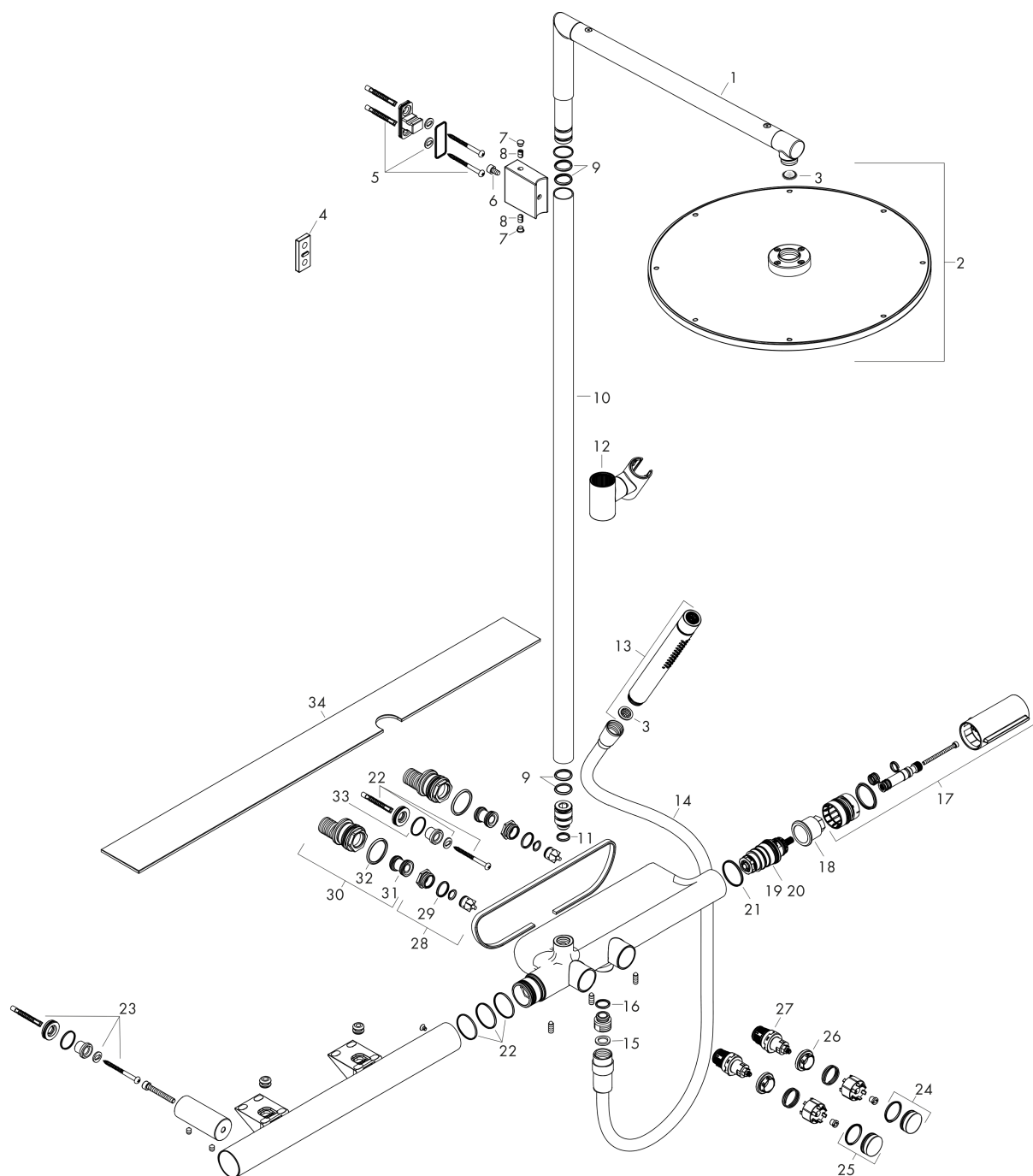
- Distance from wall to shower head center: 1044
- Distance from wall to shower head center (alternative): 865
- Distance from wall to shower head center (alternative): 63
- Distance from wall to shower head center (alternative): 30
- Distance from wall to shower head center (alternative): 54
- Distance from wall to shower head center (alternative): 92°
- Distance from wall to shower head center (alternative): 639
- Distance from wall to shower head center (alternative): 398
- Distance from wall to shower head center (alternative): 987
- Distance from wall to shower head center (alternative): 105
- Distance from wall to shower head center (alternative): G1/2
- Distance from wall to shower head center (alternative): 1944
- Distance from wall to shower head center (alternative): 2044
- Distance from wall to shower head center (alternative): 2144
- Distance from wall to shower head center (alternative): 900
- Distance from wall to shower head center (alternative): 1000
- Distance from wall to shower head center (alternative): 1100
- Distance from wall to shower head center (alternative): min. 25

AXOR ShowerSolutions
Showerpipe with thermostat 800 and overhead shower 350 1jet
 Surfaces: **Stainless Steel Optic** Article Number: **27984800**



Exploded Drawing

Year of production: >11/17



AXOR ShowerSolutions
Showerpipe with thermostat 800 and overhead shower 350 1jet
 Surfaces: **Stainless Steel Optic** Article Number: **27984800**



Spare part list

Year of production: >11/17

Pos.	Description	Article Number	PC	PU
1	shower arm	93289800	0	1
2	head shower	93288800	0	1
3	filter packing	94246000	0	1
4	tile-matching-disk	93155800	0	1
5	mounting set	98716000	0	1
6	hexagon socket screw M6x10	92847000	0	1
7	cover cap	96541001	0	1
8	hollow set screw M6x10 DIN 916	96029000	0	1
9	O-ring 17x2,5	98387000	0	1
10	pipe	93287800	0	1
11	O-ring 12x2,25	98382000	0	1
12	support, assy	95480800	0	1
13	handshower	28532800	0	1
14	shower hose 1,60 m	93360800	0	1
15	seal	98058000	0	1
16	O-ring 14x2	98129000	0	1
17	handle for thermostat	93291800	0	1
18	nut	93294000	0	1
19	thermostat cartridge	98282000	0	1
20	cartridge for exchanged connections	92373000	0	1
21	O-ring 32x1,5	92936000	0	1
22	O-ring 30x1,5	98433000	0	1
23	mounting set	96179000	0	1
24	symbol handshower	93295000	0	1
25	symbol head shower Rain small	93296000	0	1
26	nut	98368000	0	1
27	shut off unit	95758000	0	1
28	non return valve (pressure-resistant up to 2 MPa)	95773000	0	1
29	O-ring 17x2	98199000	0	1
30	set of S-unions	95772000	0	1
31	noise reduction	96429000	0	1
32	O-ring 29x3	98371000	0	1
33	O-ring 22x1,5	98173000	0	1
34	shelf	93290000	0	1