

## AXOR ShowerSolutions

### Thermostatic module Select 460/90 for concealed installation for 2 functions

Surfaces: **Chrome** Article Number: **18355000**



#### Description

##### product features

- consists of: Thermostatic module, shower holder
- depending on volume flow and installation situation approx. 50% flow rate reduction and integrated shut off function
- 2 outlets
- simultaneous use of several outlets
- Select push-button on/off control for 2 outlets
- maximum flow rate at 0.3 MPa: 26 l/min
- thermostat cartridge, Select valve
- min. operating pressure: 1 bar
- max. operating pressure: 10 bar
- safety lock at 40° C
- temperature limitation adjustable
- hose nut: for shower hoses with conical or cylindrical nut on both sides
- connection type: basic set
- Thermostat is delivered with buttons Waterfall, Rain large, Mono, hand shower
- Watermark WMK25718 / TMV
- ACS 18 ACC LY 046, valide jusqu'au 24.01.2023
- JWWA E-565

#### Technology



#### Design awards



## AXOR ShowerSolutions

Thermostatic module **Select 460/90** for concealed installation for 2 functions

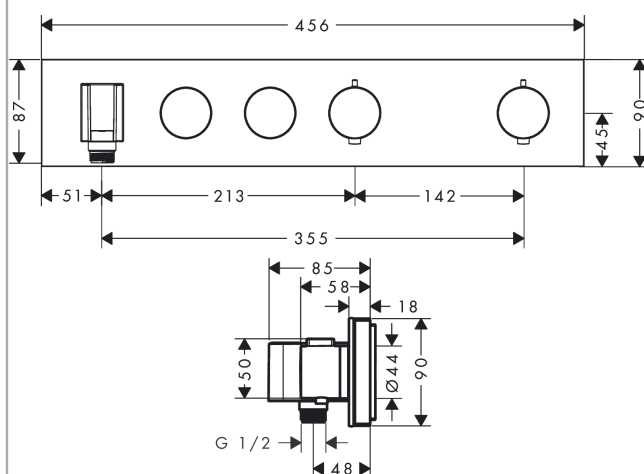
Surfaces: **Chrome** Article Number: **18355000**



Product image



Scale drawing



## AXOR ShowerSolutions

Thermostatic module Select 460/90 for concealed installation for 2 functions

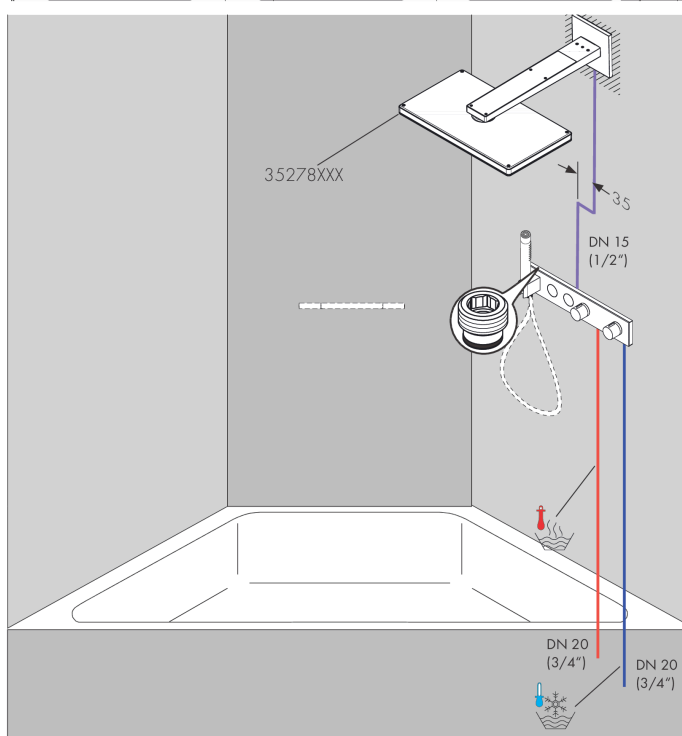
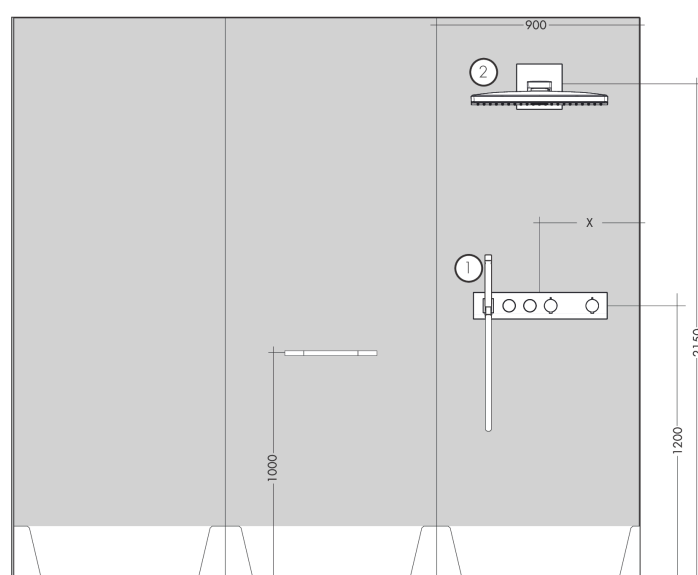
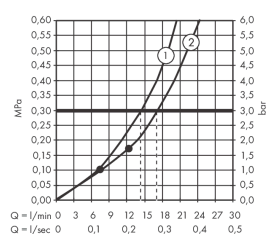
Surfaces: **Chrome** Article Number: **18355000**



## Installation examples

AXOR Select

1831018X/18355XXX



## AXOR ShowerSolutions

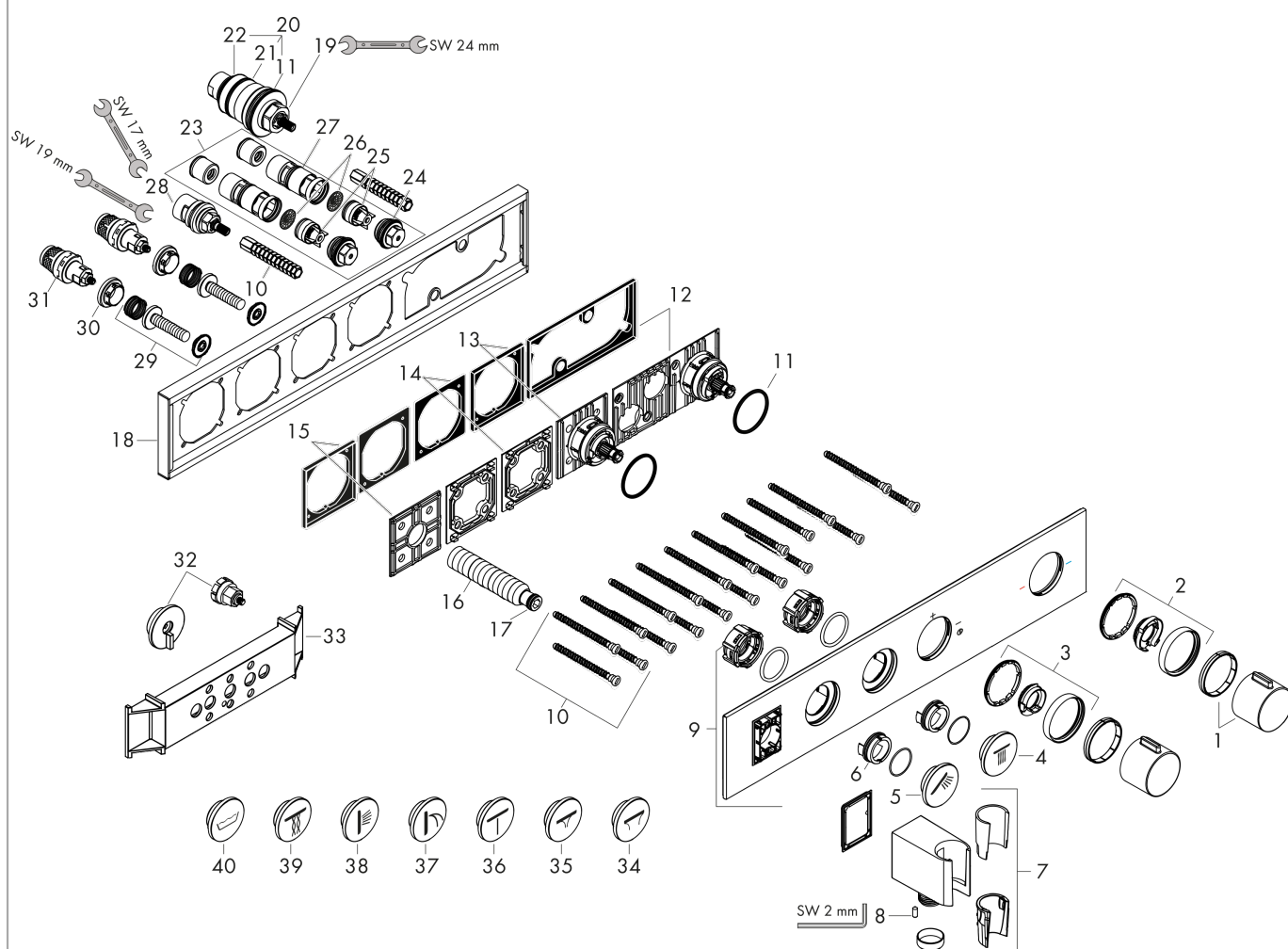
Thermostatic module Select 460/90 for concealed installation for 2 functions

Surfaces: **Chrome** Article Number: **18355000**



### Exploded Drawing

Year of production: >01/18



## AXOR ShowerSolutions

Thermostatic module Select 460/90 for concealed installation for 2 functions

Surfaces: **Chrome** Article Number: **18355000**



### Spare part list

Year of production: >01/18

Pos.	Description	Article Number	PC	PU
1	handle	93313000	0	1
2	safety set	93337000	0	1
3	safety set	93338000	0	1
4	symbol head shower	93308000	0	1
5	symbol handshower	93307000	0	1
6	adapter for symbol	93398000	0	1
7	shower holder, assy	93114000	0	1
8	hollow set screw M4x8	97669000	0	1
9	cover	93322000	0	1
10	mounting kit	93102000	0	1
11	O-ring 38x2,5	98198000	0	1
12	adapter for handle	93109000	0	1
13	adapter for handle	93315000	0	1
14	support element	93330000	0	1
15	support element	93314000	0	1
16	connecting thread G½	98933000	0	1
17	O-ring 11x2	98127000	0	1
18	escutcheon	93326000	0	1
19	thermostat cartridge	96633000	0	1
20	sealing set	96636000	0	1
21	O-ring 34x2	98383000	0	1
22	O-ring 26x2	98147000	0	1
23	service unit	93406000	0	1
24	O-ring 20x2	98165000	0	1
25	non return valve	96655000	0	1
26	filter	97367000	0	1
27	O-ring 20x1,5	98197000	0	1
28	shut off unit	98536000	0	1
29	Select-adapter	93103000	0	1
30	nut	98368000	0	1
31	shut off unit	95758000	0	1
32	fit-up aid	93487000	0	1
33	fit-up aid	92540000	0	1
34	symbol PowderRain outside	93312000	0	1

## AXOR ShowerSolutions

Thermostatic module Select 460/90 for concealed installation for 2 functions

Surfaces: **Chrome** Article Number: **18355000**



### Spare part list

Year of production: >01/18

Pos.	Description	Article Number	PC	PU
35	symbol PowderRain inside	93311000	0	1
36	symbol Mono	93310000	0	1
37	symbol Flood jet	93309000	0	1
38	symbol body shower	93334000	0	1
39	symbol Whirl	93413000	0	1
40	symbol tub	93335000	0	1
a	concealed item	18310180	0	1
b	extension 16 mm	93437000	0	1
c	extension 25 mm	93432000	0	1