

AXOR Montreux

3-hole basin mixer for concealed installation wall-mounted with spout 165 - 225 mm and cross handles

Surfaces: **Brushed Nickel** Article Number: **16532820**



Description

product features

- consists of: 3-hole basin mixer for concealed installation wall-mounted, waste set
- projection 165 - 225 mm
- normal spray
- flow rate at 3 bar: 5 l/min
- ceramic valves hot/ cold 90°
- suitable for continuous flow water heaters
- non-closing waste set
- connection dimension: DN15

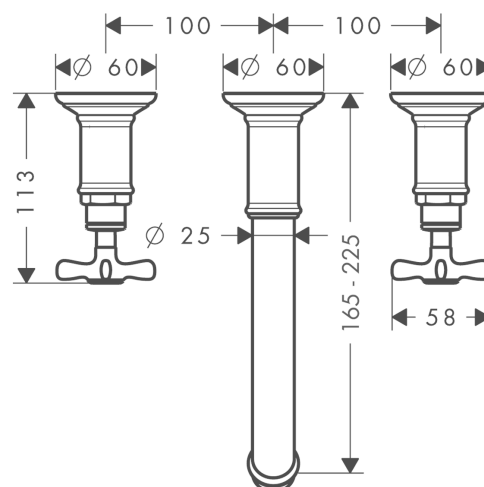
Technology



Product image



Scale drawing



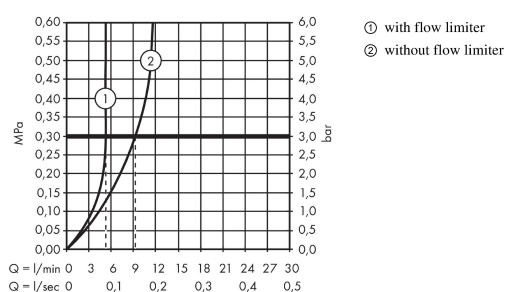
AXOR Montreux

3-hole basin mixer for concealed installation wall-mounted with spout 165 - 225 mm and cross handles

Surfaces: **Brushed Nickel** Article Number: **16532820**



Flowchart



AXOR Montreux

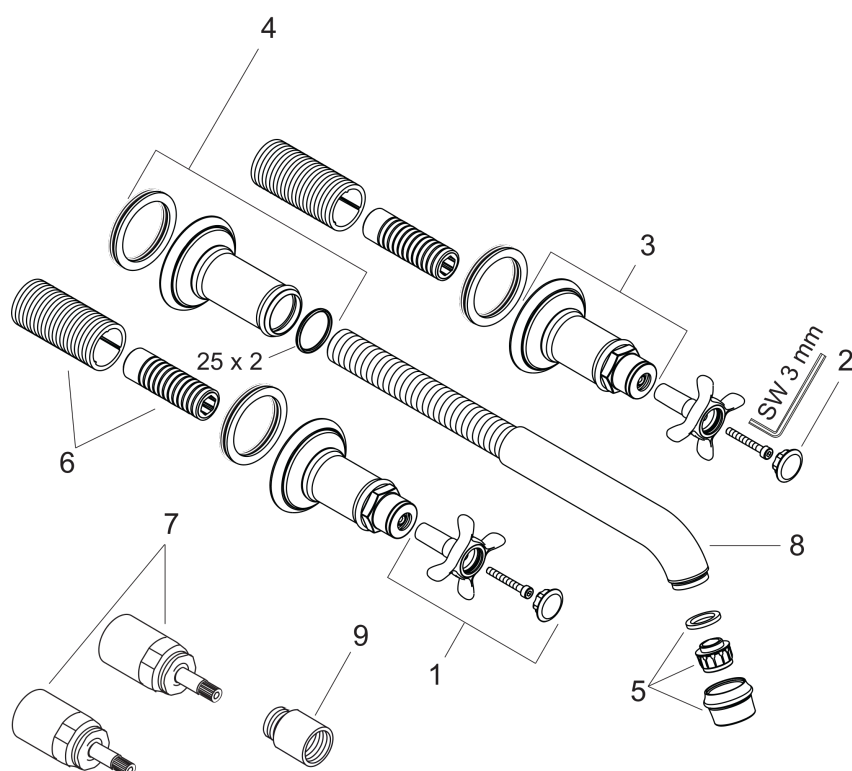
3-hole basin mixer for concealed installation wall-mounted with spout 165 - 225 mm and cross handles

Surfaces: **Brushed Nickel** Article Number: **16532820**



Exploded Drawing

Year of production: >01/09



AXOR Montreux

3-hole basin mixer for concealed installation wall-mounted with spout 165 - 225 mm and cross handles

Surfaces: **Brushed Nickel** Article Number: **16532820**



Spare part list

Year of production: >01/09

Pos.	Description	Article Number	PC	PU
1	handle	16291820	0	1
2	set of screw covers, cold / hot water / neutral	97987000	0	1
3	escutcheon for handle	98578820	0	1
4	escutcheon for spout	98576820	0	1
5	aerator M22x1 (5 l/min + 25 l/min)	95381820	0	1
6	fixing set	96392000	0	1
7	extension 25 mm	96259000	0	1
8	spout cpl.	98574820	0	1
9	extension 25 mm	95413000	0	1
a	pop up waste	50001820	0	1
b	base body	10303180	0	1
c	mounting-set V+B	96142000	0	1