

## AXOR Montreux

### 2-handle basin mixer 220 with cross handles and pop-up waste set

Surfaces: **Brushed Nickel** Article Number: **16510820**



#### Description

##### product features

- consists of: 2-handle basin mixer, waste set
- ComfortZone 220
- projection 175 mm
- swivel range 120°
- normal spray
- flow rate at 3 bar: 5 l/min
- ceramic valves hot/ cold 90°
- suitable for continuous flow water heaters
- pop-up waste set G 1¼
- connection dimension: DN15

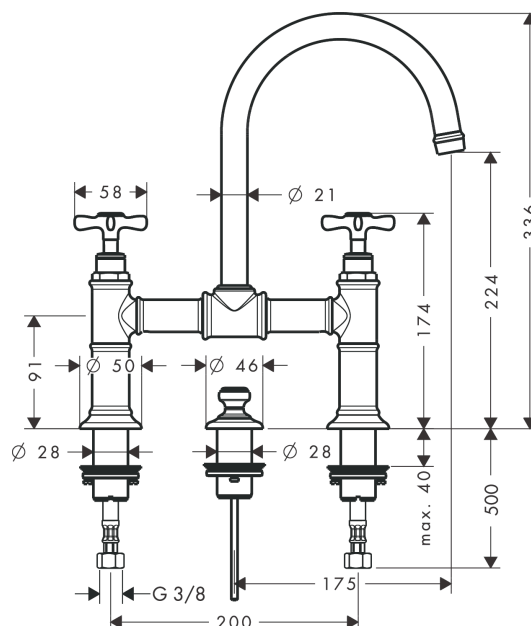
#### Technology



#### Product image



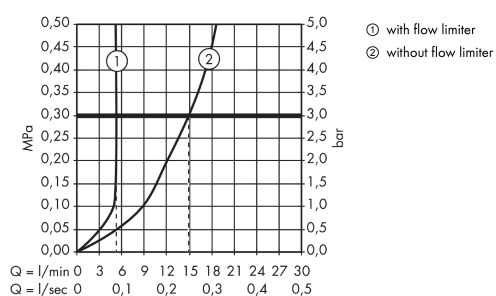
#### Scale drawing



**AXOR Montreux**  
**2-handle basin mixer 220 with cross handles and pop-up waste set**  
 Surfaces: **Brushed Nickel**    Article Number: **16510820**



## Flowchart

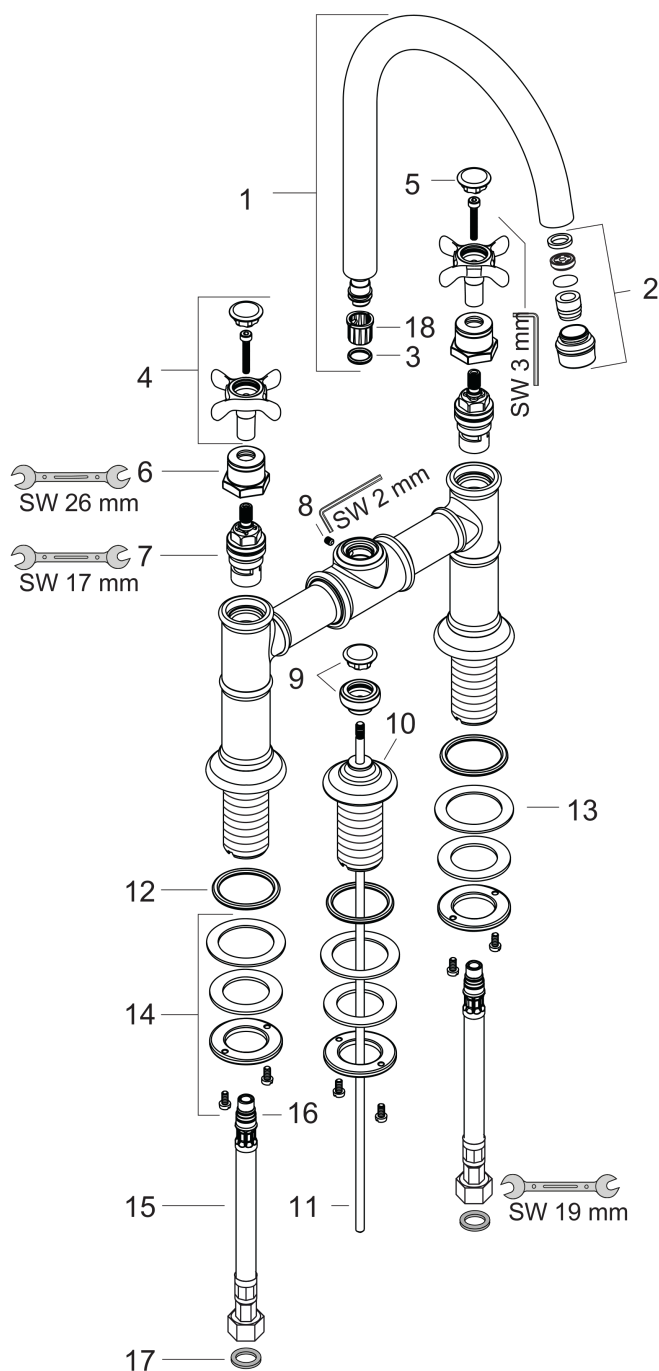


**AXOR Montreux**  
**2-handle basin mixer 220 with cross handles and pop-up waste set**  
 Surfaces: **Brushed Nickel**    Article Number: **16510820**



## Exploded Drawing

Year of production: >10/10



## AXOR Montreux

**2-handle basin mixer 220 with cross handles and pop-up waste set**

Surfaces: **Brushed Nickel** Article Number: **16510820**



### Spare part list

Year of production: >10/10

Pos.	Description	Article Number	PC	PU
1	spout cpl.	97990820	0	1
2	aerator M18x1 (5 l/min)	95378820	0	1
3	O-ring 11x2	98127000	0	1
4	handle	16597820	0	1
5	set of screw covers, cold / hot water / neutral	97987000	0	1
6	sleeve	97993820	0	1
7	shut off unit right closing	94009000	0	1
8	hollow set screw M4x5	98731000	0	1
9	diverter knob	98619820	0	1
10	escutcheon	98620820	0	1
11	pull rod	94067000	0	1
12	O-ring 34x4	98155000	0	1
13	lever collar	97548000	0	1
14	fixing set for shut off unit	96078000	0	1
15	connection hose 600 mm M10x1 G3/8	97398000	0	1
16	O-ring 8x1,75	97827000	0	1
17	sealing set	95581000	0	1
18	lever collar	92849000	0	1
a	supply pipe 490 mm	96786000	0	1
b	pop up waste	94139820	0	1