

**AXOR Montreux**  
**2-handle basin mixer 210 with cross handles and waste set**  
 Surfaces: **Chrome** Article Number: **16506000**



## Description

### product features

- consists of: 2-handle basin mixer, waste set
- ComfortZone 210
- projection 175 mm
- swivel range 120°
- normal spray
- flow rate at 3 bar: 5 l/min
- ceramic valves hot/ cold 180°
- suitable for continuous flow water heaters
- non-closing waste set
- connection dimension: DN15

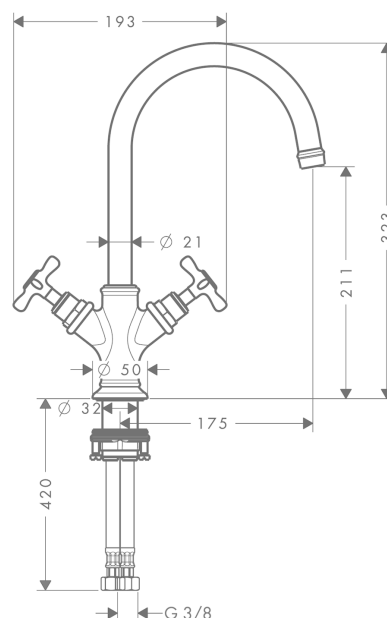
## Technology



## Product image



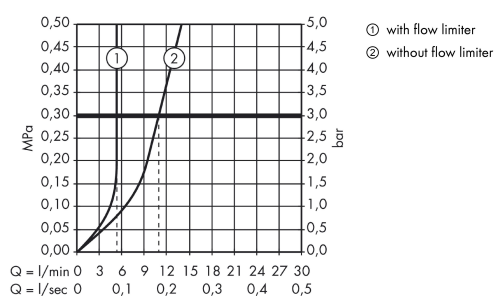
## Scale drawing



**AXOR Montreux**  
**2-handle basin mixer 210 with cross handles and waste set**  
 Surfaces: **Chrome**    Article Number: **16506000**

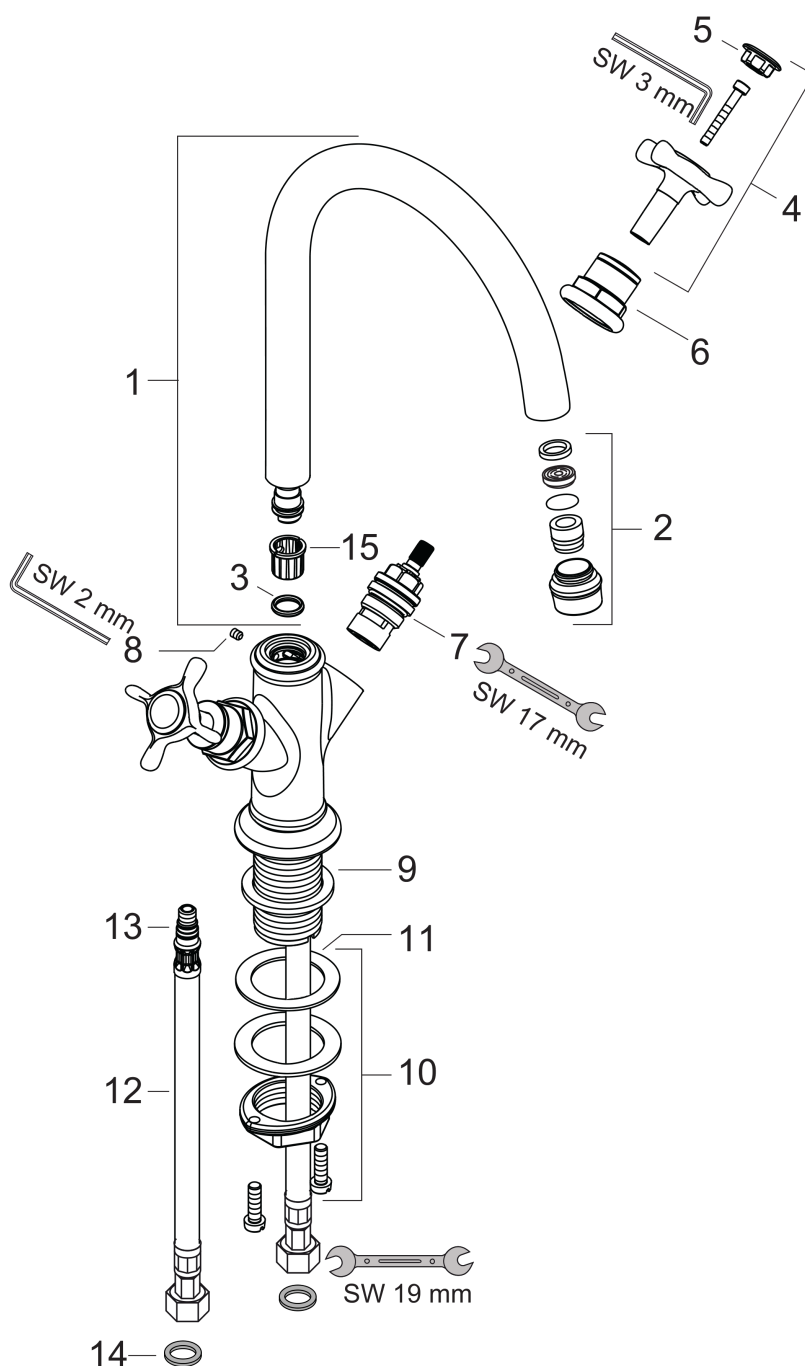


## Flowchart





Year of production: **>10/10**



**AXOR Montreux**  
**2-handle basin mixer 210 with cross handles and waste set**  
 Surfaces: **Chrome**    Article Number: **16506000**



## Spare part list

Year of production: >10/10

Pos.	Description	Article Number	PC	PU
1	spout cpl.	97990000	0	1
2	aerator M18x1 (5 l/min)	95378000	0	1
3	O-ring 11x2	98127000	0	1
4	handle	16291000	0	1
5	set of screw covers, cold / hot water / neutral	97987000	0	1
6	sleeve	97993000	0	1
7	shut off unit right closing	94009000	0	1
8	hollow set screw M4x5	98731000	0	1
9	flat seal	98749000	0	1
10	fixing set (Ø 32)	13961000	0	1
11	lever collar	97548000	0	1
12	connection hose 450 mm M8x0,75 G3/8	97206000	0	1
13	O-ring 7x1,5	98422000	0	1
14	sealing set	95581000	0	1
15	lever collar	92849000	0	1
a	pop up waste	50001000	0	1
b	fixation extension 35 mm	13898000	0	1