

AXOR Uno
Single lever kitchen mixer 230 with swivel spout
 Surfaces: **Chrome** Article Number: **14850000**



Description

product features

- ComfortZone 230
- swivel range adjustable in 3 steps 110°, 150° or 360°
- handle can be positioned on the right or left
- normal spray
- connection dimension: DN15
- maximum flow rate at 3 bar: 13 l/min
- ceramic cartridge
- connection type: G 3/8 connections
- integrated non-return valve
- suitable for continuous flow water heaters
- SVGW 1712-6707
- P-IX 9170/IA
- ETA VA 1.42/19148
- ACS 17 ACC LY 653, valide jusqu'au 20.07.2022
- WRAS 1905047
- JWWA C-501
- KCW-2012-0427_KM_WSW
- STA 1375

Technology



Design awards

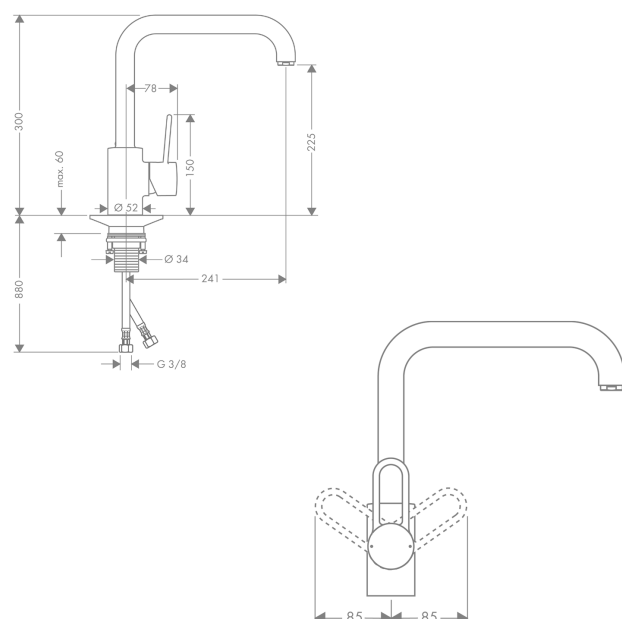


reddot design award

Product image



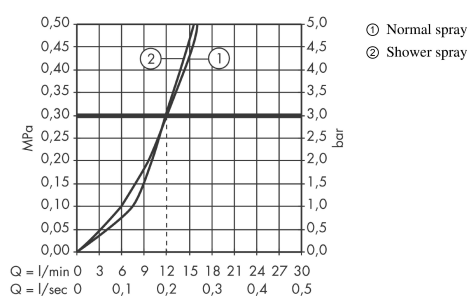
Scale drawing



AXOR Uno
Single lever kitchen mixer 230 with swivel spout
 Surfaces: **Chrome** Article Number: **14850000**



Flowchart

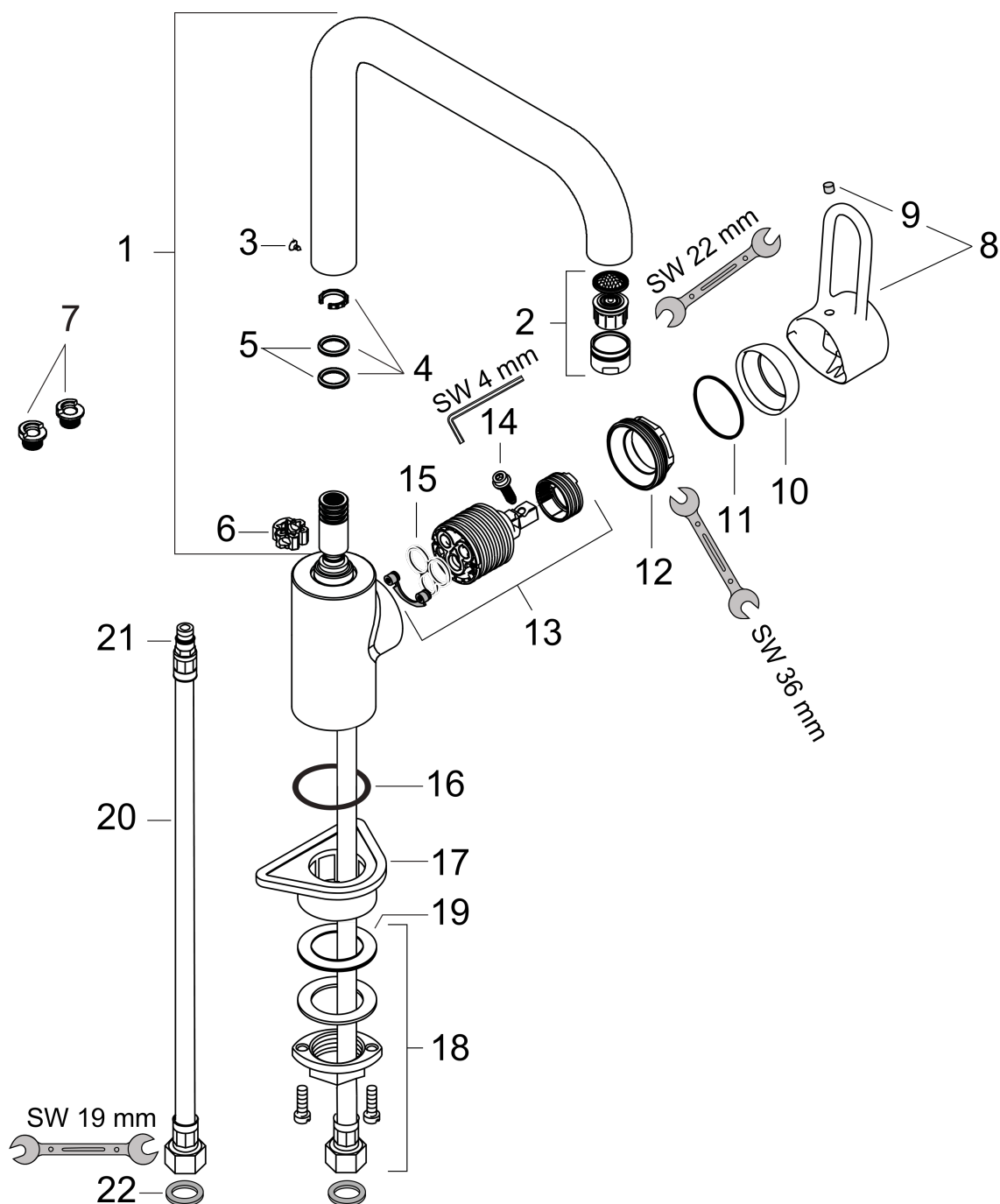


AXOR Uno
Single lever kitchen mixer 230 with swivel spout
 Surfaces: **Chrome** Article Number: **14850000**



Exploded Drawing

Year of production: >10/13



AXOR Uno
Single lever kitchen mixer 230 with swivel spout
 Surfaces: **Chrome** Article Number: **14850000**



Spare part list

Year of production: >10/13

Pos.	Description	Article Number	PC	PU
1	spout cpl.	96514000	0	1
2	aerator M24x1 (15 l/min)	13913000	0	1
3	screw	97662000	0	1
4	sealing set	92646000	0	1
5	O-Ring 14x2,5	98189000	0	1
6	axialring	97558000	0	1
7	set of locating rings (110° / 150°)	98486000	0	1
8	handle	14896000	0	1
9	screw cover	96338000	0	1
10	flange	96468000	0	1
11	O-ring 37x2	92115000	0	1
12	nut	96461000	0	1
13	cartridge, assy	92730000	0	1
14	locking screw for handle	95140000	0	1
15	seal	95008000	0	1
16	O-ring 37x3	98476000	0	1
17	support	97523000	0	1
18	fixing set (Ø 34)	95049000	0	1
19	lever collar	97548000	0	1
20	connection hose 900 mm M10x1 G3/8	98785000	0	1
21	O-ring 8x1,75	97827000	0	1
22	sealing set	95581000	0	1