

AXOR ShowerSolutions
Shut-off valve 120/120 for concealed installation square
 Surfaces: **Chrome** Article Number: **10972000**



Description

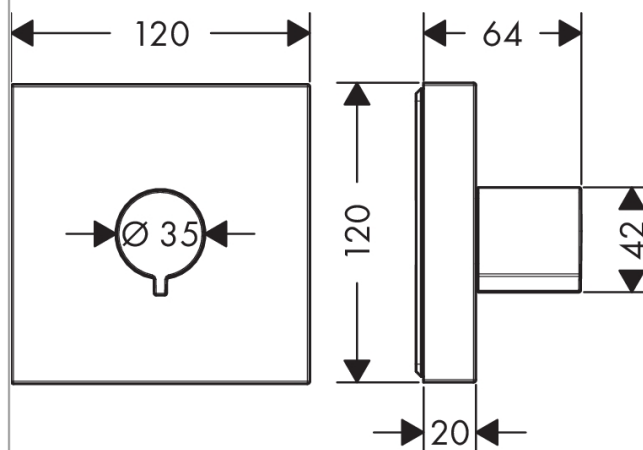
product features

- connection type: DN15/DN20
- in a joined installation (10 mm distance) with no.10755000, no.10751000, no.10651000, no.28491000, no.40872000, no.40873000 or no.40874000 the use of basic set no.10971180 is recommended
- in a freely arranged installation, basic sets no.15973180, no.15974180 or no.15970180 can also be used
- SVGW 0904-5541
- WRAS 1707113
- JWWA E-420
- NSF Declaration 160996
- STA 1398

Product image



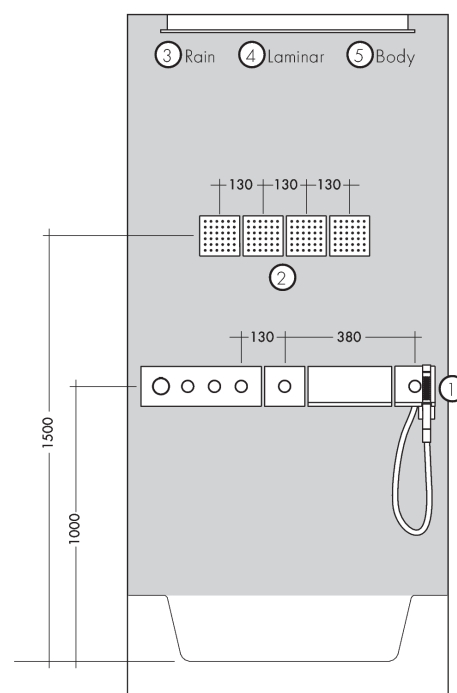
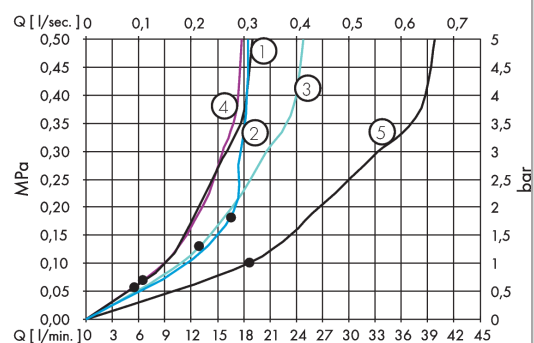
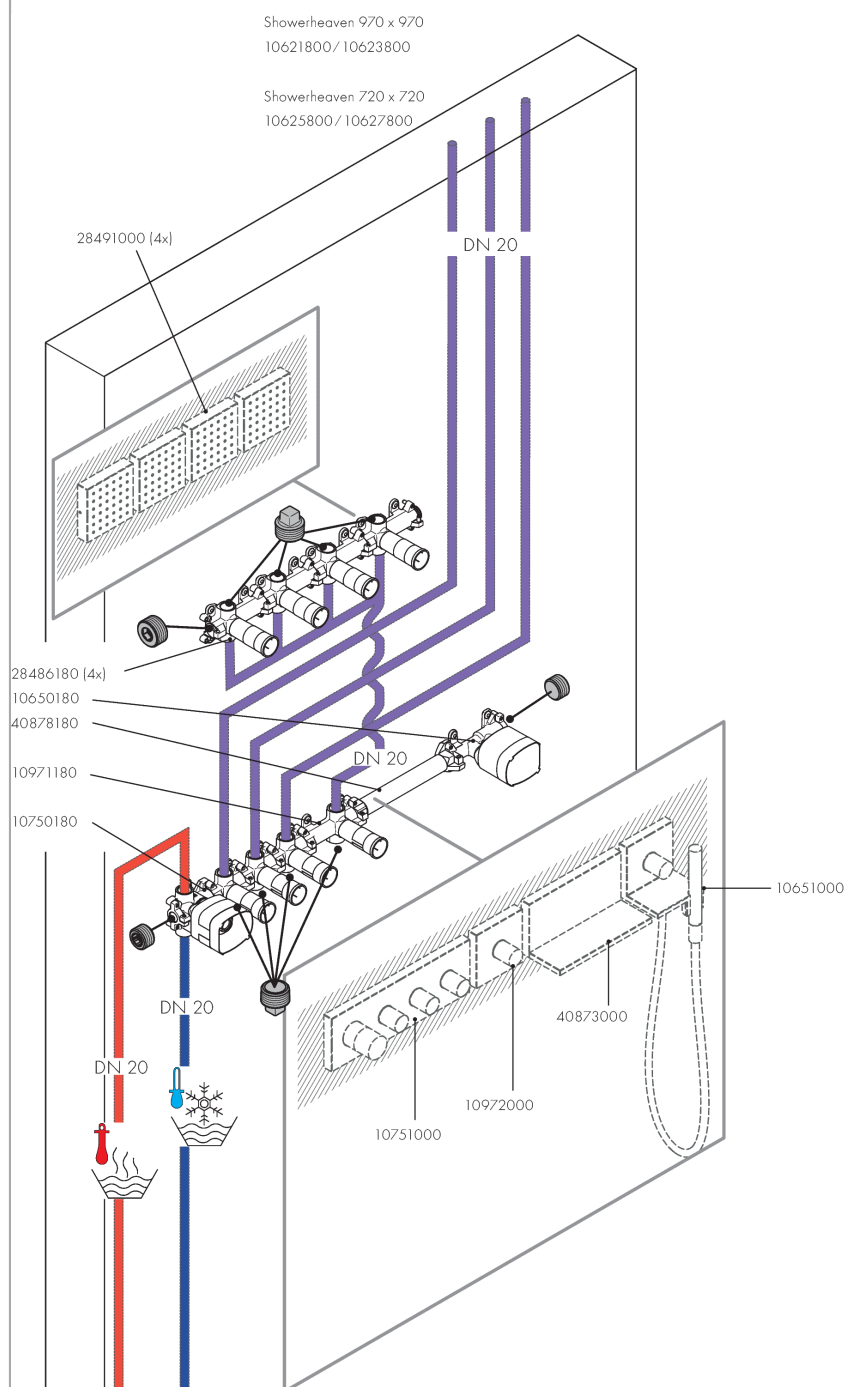
Scale drawing



AXOR ShowerSolutions
Shut-off valve 120/120 for concealed installation square
 Surfaces: **Chrome** Article Number: **10972000**



Installation examples

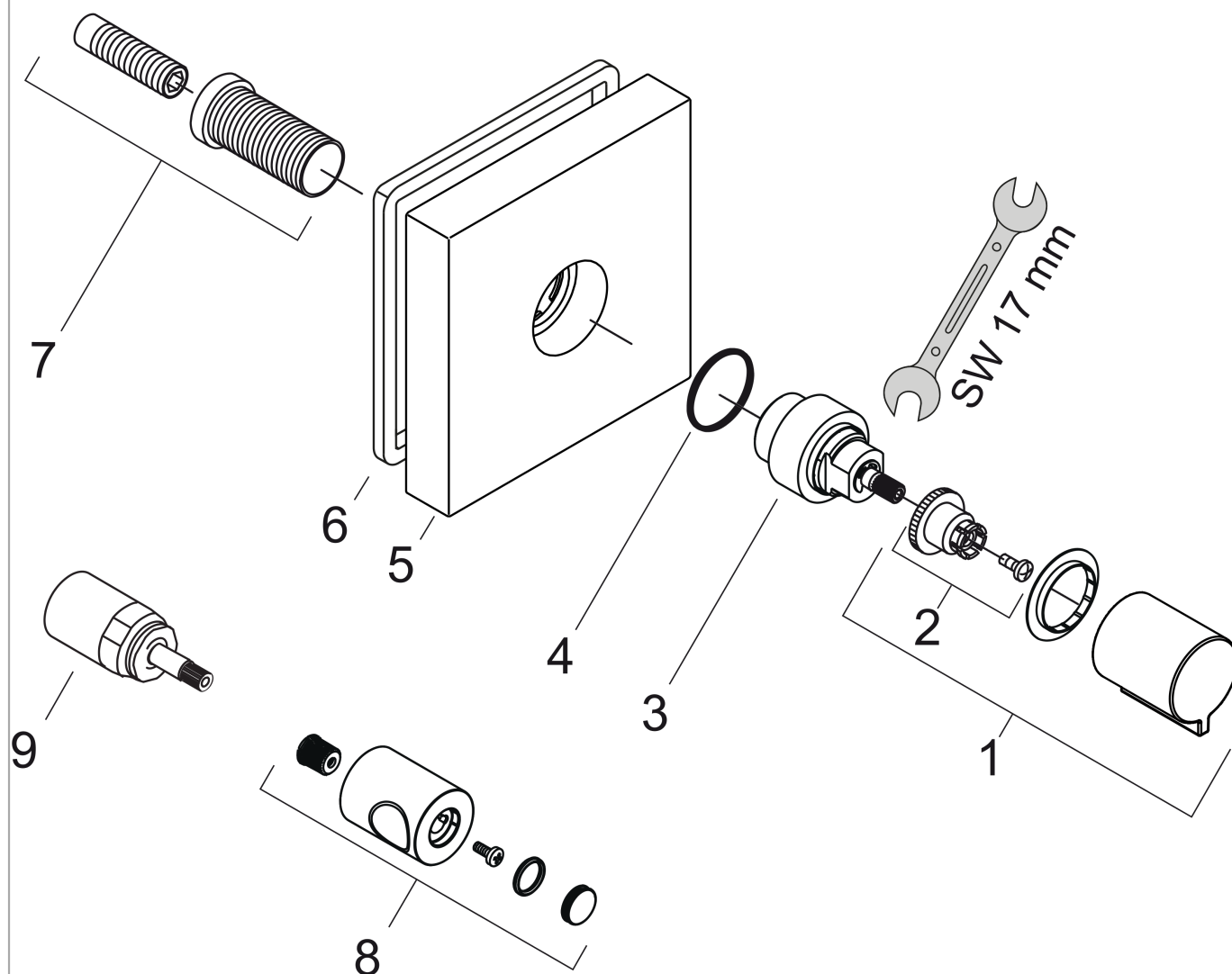


AXOR ShowerSolutions
Shut-off valve 120/120 for concealed installation square
 Surfaces: **Chrome** Article Number: **10972000**



Exploded Drawing

Year of production: >02/14



AXOR ShowerSolutions
Shut-off valve 120/120 for concealed installation square
 Surfaces: **Chrome** Article Number: **10972000**



Spare part list

Year of production: >02/14

| Pos. | Description | Article Number | PC | PU |
|------|-----------------------------|----------------|----|----|
| 1 | handle | 92338000 | 0 | 1 |
| 2 | handle fixing set | 94184000 | 0 | 1 |
| 3 | adapter for handle | 95153000 | 0 | 1 |
| 4 | O-ring 26x2 | 98147000 | 0 | 1 |
| 5 | escutcheon | 95358000 | 0 | 1 |
| 6 | seal | 97737000 | 0 | 1 |
| 7 | fixing set | 96393000 | 0 | 1 |
| 8 | handle | 95423000 | 0 | 1 |
| 9 | extension 25 mm | 96370000 | 0 | 1 |
| a | concealed item | 10971180 | 0 | 1 |
| b | concealed items 1/2" | 15973180 | 0 | 1 |
| c | concealed items 1/2" | 15974180 | 0 | 1 |
| d | concealed items DN20 (3/4") | 15970180 | 0 | 1 |