

## AXOR ShowerSolutions

### Basic set for shut-off valve 120/120 for concealed installation

Surfaces: n.a. Article Number: 10971180



## Description

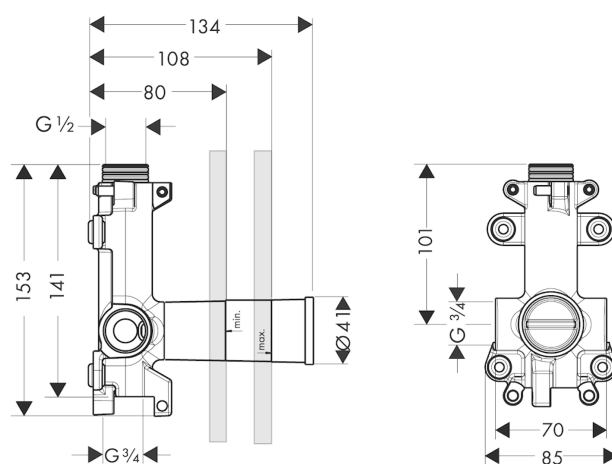
### product features

- flow rate at free through-flow: 55 l/min
- suitable for all shut-off valves finish sets
- connection from left or right
- sound-decoupled installation
- in a joined installation it serves as a waterconducting unit and allows dimensionally accurate positioning
- connection dimension: DN15
- SVGW 0904-5541
- P-IX 29476/II
- ACS 19 ACC LY 041, valide jusqu'au 07.11.2023
- WRAS 1810705
- WRAS 1810705
- JWWA E-420
- REG 4 180017
- STA 1398

## Product image



## Scale drawing



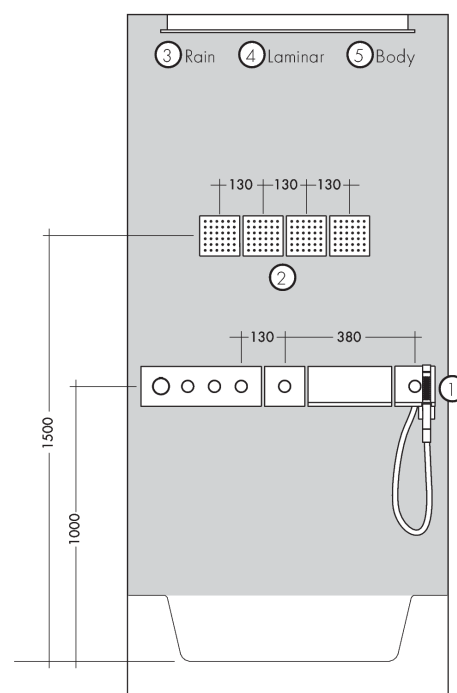
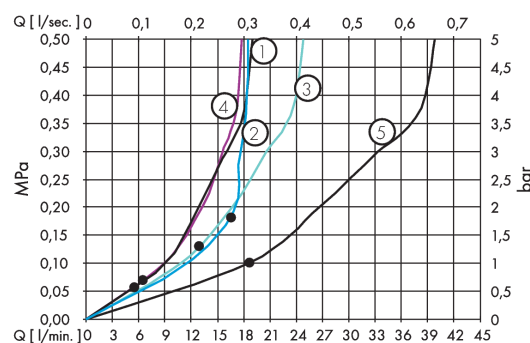
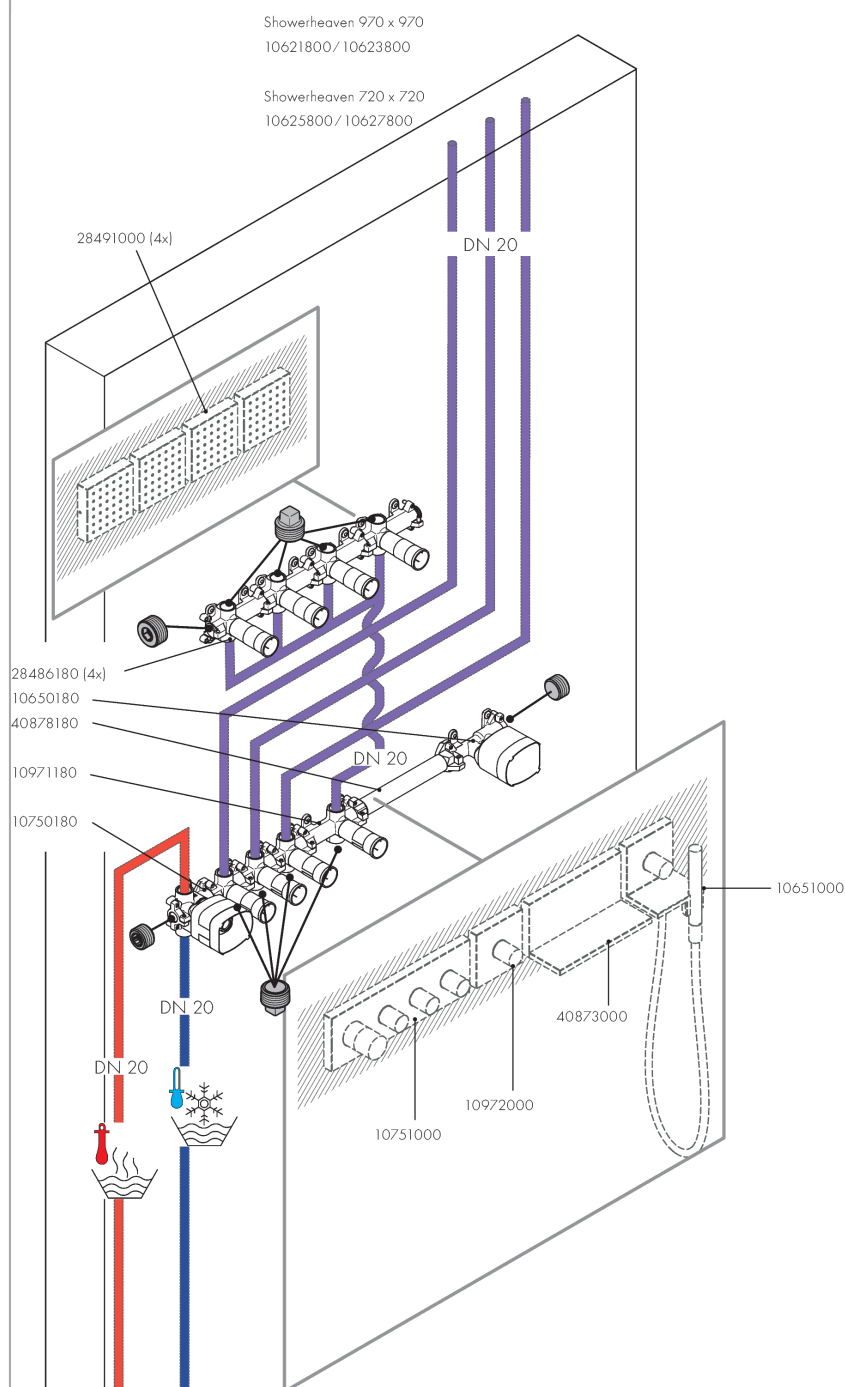
## AXOR ShowerSolutions

Basic set for shut-off valve 120/120 for concealed installation

Surfaces: n.a. Article Number: 10971180



### Installation examples

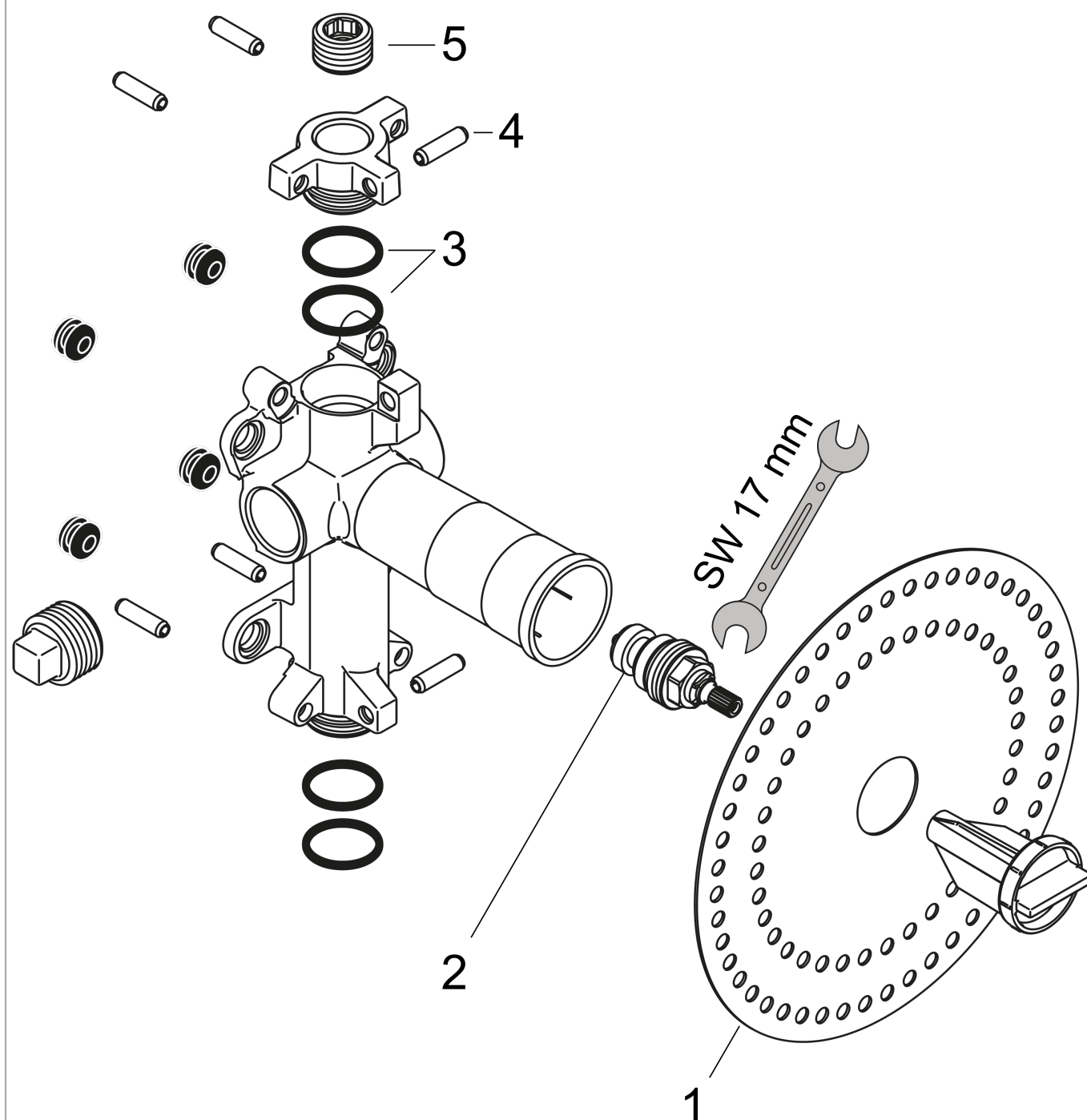


**AXOR ShowerSolutions**  
**Basic set for shut-off valve 120/120 for concealed installation**  
 Surfaces: n.a. Article Number: 10971180



## Exploded Drawing

Year of production: >04/15



## AXOR ShowerSolutions

**Basic set for shut-off valve 120/120 for concealed installation**

Surfaces: **n.a.** Article Number: **10971180**



### Spare part list

Year of production: **>04/15**

Pos.	Description	Article Number	PC	PU
1	sealing foil	96492000	0	1
2	shut off unit with spindle 1/2"	94142000	0	1
3	O-Ring 32x2	98193000	0	1
4	pin	95334000	0	1
5	plug	97998000	0	1
a	extension 25 mm	96370000	0	1