

AXOR ShowerSolutions

Basic set for hand shower module 120/120 for concealed installation

Surfaces: n.a. Article Number: **10650180**



Description

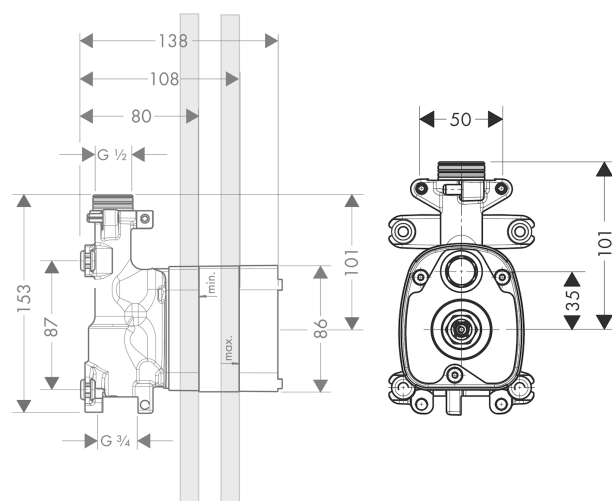
product features

- flow rate at free through-flow: 30 l/min
- ceramic valve 180°
- horizontal or vertical installation
- sound-decoupled installation
- in a joined installation it serves as a waterconducting unit and allows dimensionally accurate positioning
- connection dimension: DN15
- P-IX 29508/IO
- ETA VA1.43/20399
- ACS 19 ACC LY 041, valide jusqu'au 07.11.2023
- JWWA C-279
- SINTEF 3095
- REG 4 170412
- STA 1401

Product image



Scale drawing



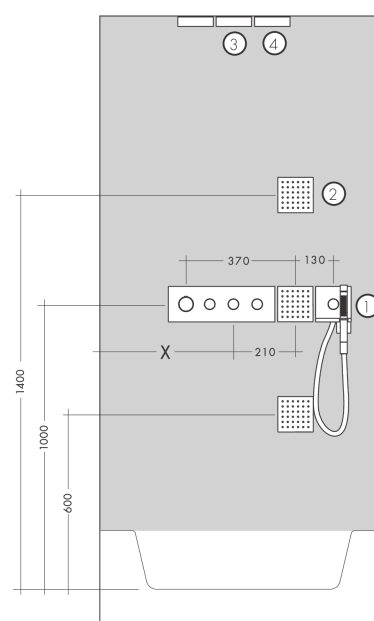
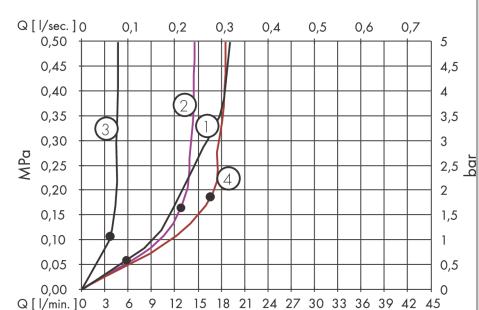
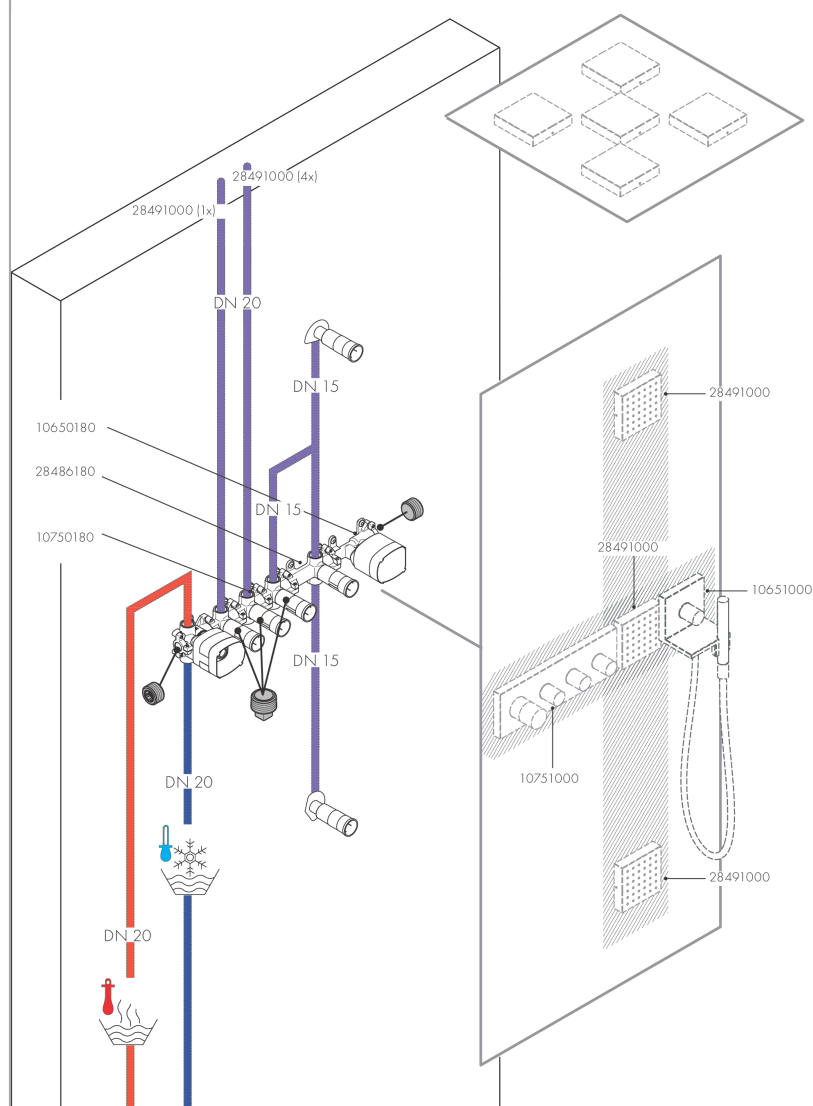
AXOR ShowerSolutions

Basic set for hand shower module 120/120 for concealed installation

Surfaces: n.a. Article Number: 10650180



Installation examples



AXOR ShowerSolutions

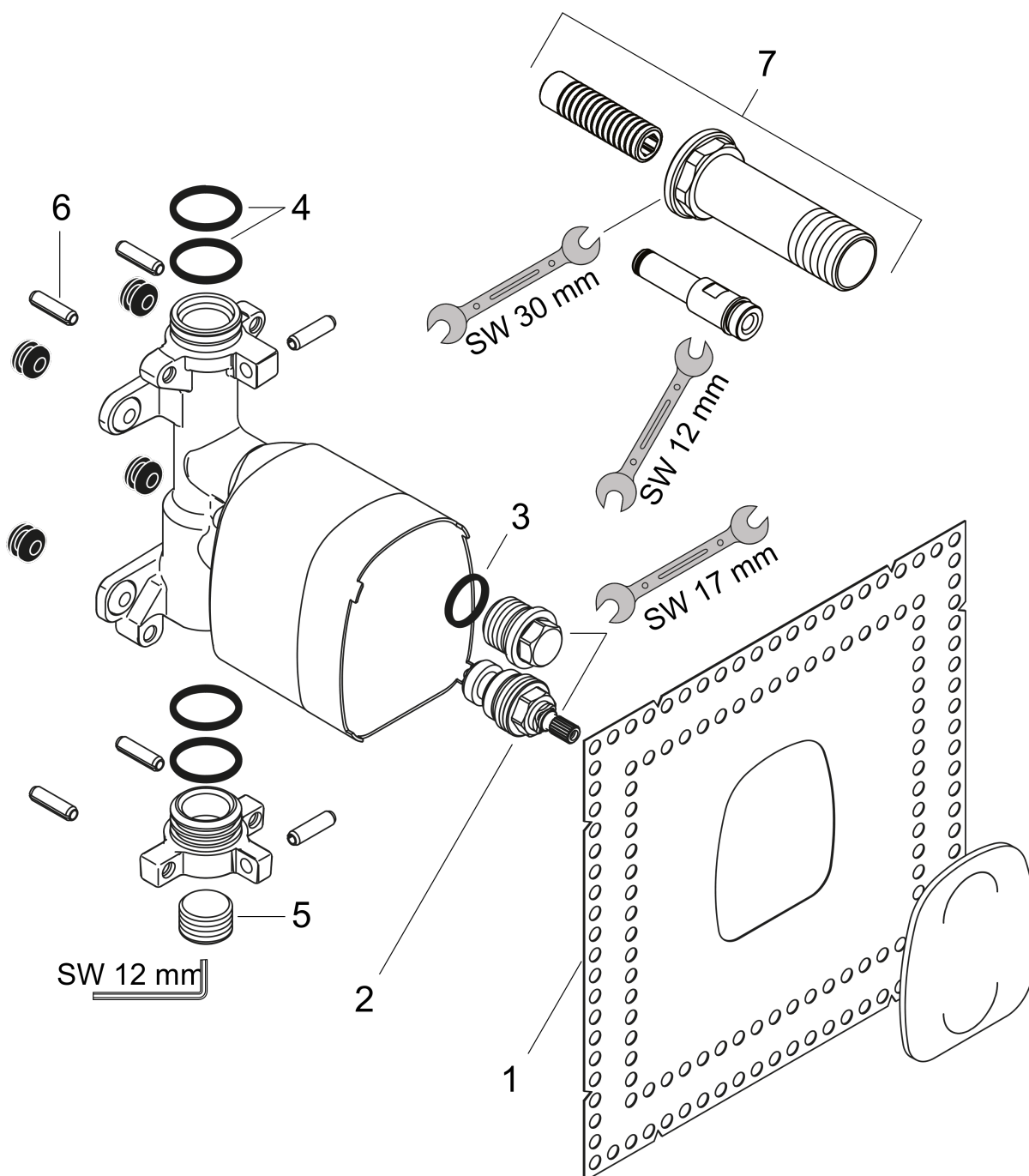
Basic set for hand shower module 120/120 for concealed installation

Surfaces: n.a. Article Number: 10650180



Exploded Drawing

Year of production: >03/15



AXOR ShowerSolutions

Basic set for hand shower module 120/120 for concealed installation

Surfaces: n.a. Article Number: **10650180**



Spare part list

Year of production: >03/15

Pos.	Description	Article Number	PC	PU
1	sealing foil	95389000	0	1
2	shut off unit with spindle 1/2"	94142000	0	1
3	O-ring 18x2	98181000	0	1
4	plug	95335000	0	1
5	O-Ring 23x2,5	98183000	0	1
6	pin	95334000	0	1
7	extension set	10658000	0	1